

# Workflow for programming infusion protocol, downloading, activation for Instant Constant Infusion Protocol.

## Instant Constant

### BookMarks of UserManual

iPRECIO Global Workflow Pg. 9 & 10  
Review Checklist for precautions on Pg. 8

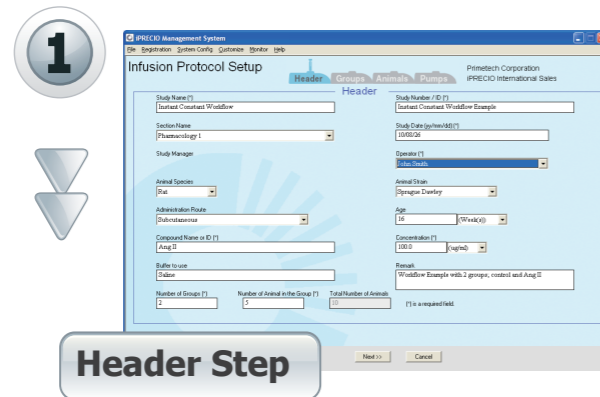
Starting a new study:  
with number of groups/animals/drug concentration etc.  
Pg. 30

Infusion & Flow Rate modes Review  
Pg. 25 - 27  
Study Programming  
Pg. 31 - 35

Pump Detection (Recognition) & Program Pump  
Pg. 36 & 37 respectively

Surgical Guide, Initial Fill & Activation  
Pg. 40, 43 & 44 respectively

iPRECIO Management  
Pg. 61



### Header Step

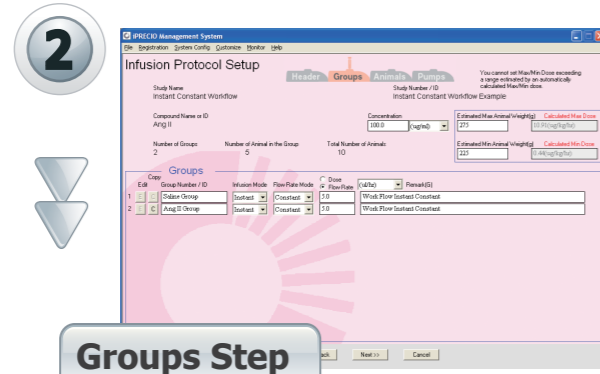
**Start a New Study** Go to Header Step of iPRECIO® Software. Fill in details. All fields marked with \*(asterisk is required) and these are:

- Required Fields**
1. Study Name
  2. Compound Name or ID
  3. Number of Groups
  4. Number of Animal in the group
  5. Study Number/ID
  6. Study Date
  7. Operator
  8. Concentration

- Example**
1. Instant Constant Workflow
  2. Ang II
  3. 2
  4. 5
  5. Instant Constant Workflow Example
  6. 10/08/03
  7. John Smith (Select your name)
  8. 100

### Comment

For this example 2 groups, one for saline and second for Ang II. 5 animals per group. It is also recommended to fill all fields as it will serve as a study record.



### Groups Step

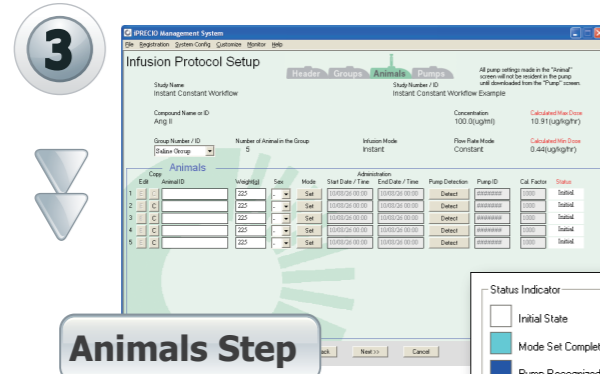
**Animal Groups Setting** Need to fill in the following fields:

- Required Fields**
1. Concentration (if not filled in Header Step)
  2. Estimated Max/Min Animal Weight
  3. Enter Group Number/ID
  4. Select Infusion Mode
  5. Flow Rate Mode
  6. Select Dose or Flow Rate
  7. Flow Rate

- Example**
1. 100
  2. 275 max & 225 min
  3. Saline Group & Ang II Group
  4. Instant
  5. Constant
  6. Flow Rate
  7. 5 & 5

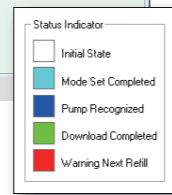
### Comment

Instant constant requires the minimum parameters for pump programming, start time/date, duration and flow rate. Both Groups Instant/Constant with 5.0 flow rate.



### Animals Step

Required fields to input are described here after. Complete Animals Setting, then set Modes and Detection.



**Animal Setting, Pump Assignment (Pump Detection/Recognition)**

- Required Fields**
1. Animal ID, 2. Weight, 3. Sex
  4. Mode (Click **Set** button)
    - a. Start Time/Date ,
    - b. Duration (Select time unit)
  5. Detect (Click **Detect** button to assign pump.)

\* Repeat steps 1-5 for each animal/pump. Alternatively use the copy function to copy from the infusion protocol from the row above and then modify animal weight/ID as required. Once all pumps have been assigned to each animal, protocols may be downloaded to the pumps.

**Example**

[Saline Group]  
1. SG1, 2. 225, 3. F  
4. a. 12/12/12 09:00, b. 46.1 (days)

**4.a.** Instant Mode dialog: Animal ID SG1, Start [yy/mm/dd hh:mm] 12/12/12 09:00

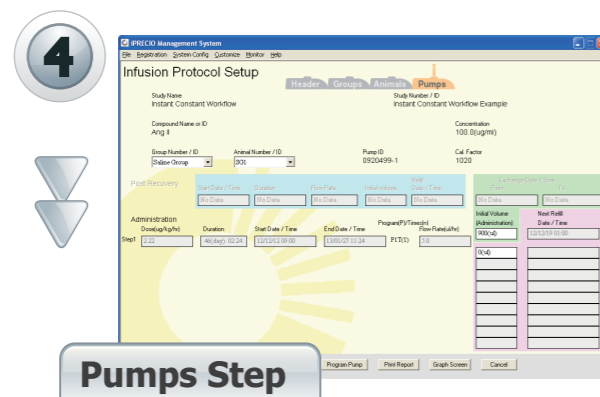
**4.b.** Constant Flow Mode dialog: Animal ID SG1, Animal Weight 225(g), Dose 2.22(ug/kg/hr), Flow Rate 5.0(ul/hr), Time Unit [Day(s)], Max Duration 46.1(Day(s)), Duration 46.1, Start Date / Time 12/12/12 09:00, End Date / Time 13/01/27 11:24

**5.** Pump Recognition dialog: Please set pump on communication device. Pump ID (SER No.) 0520499-1, Default Cal. Factor 1000. Buttons: Detect, Calibration, Cancel.

Pop-up window shown after clicking Detect button on the animal window. Click Detect button.

Pump ID and Cal. Factor recognized automatically. Click <Enter> to accept.

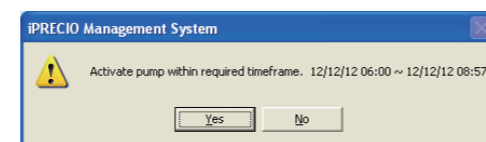
\*Repeat for all animals/pumps.



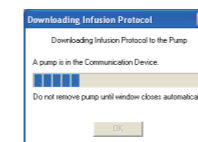
### Pumps Step

**Program Pump/Download, Pump Activation, Save Protocol and Monitoring**

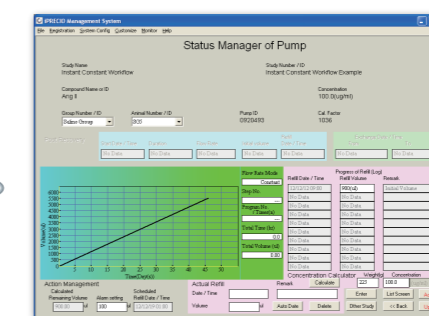
After all pumps are assigned to each animal, click **NEXT>>** to go Pumps window. Click **Program Pump** button.



Click the **Yes** button to download.



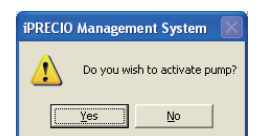
Download protocol to all pumps of all groups.



After finishing programming (downloading) to all group pumps, Status Manager of Pump is available.

To activate pumps, click **Activate** button in the Status Manager of Pump window. All pumps will need to be activated.

Each pump must be activated at the appropriate <Activation Time Window>, 3 mins to 3 hours before infusion start time.



Fill reservoir completely and ensure that solution reaches the distal end of iPRECIO pump catheter prior to activation.