

DSI FinePointe™

Software v2.8.x Installation Guide



OVERVIEW

This guide covers the installation and configuration of the FinePointe software application.

Table of Contents

Overview	3
Planning Your Installation	3
FinePointe Installation	4
FinePointe Server Configuration	12
FinePointe Client Configuration	17
UPGRADE ALL STUDIES – For upgrades to systems with existing studies.....	17
Appendix 1 – Installing .NET 3.5 on Windows 10	19
Appendix 2 – Migrating data to SQL Server 2014.....	19
Appendix 3 – Manual Driver Installation	27
Appendix 4 – Manual Microsoft SQL Server 2014 Configuration	32
Appendix 5 – Firewall Configuration	34

OVERVIEW

This guide covers the installation and configuration of the FinePointe software application. FinePointe v2.8.x is compatible with Microsoft Windows 7 (64 bit) and Windows 10 (64 bit).

In order to successfully install FinePointe, the following actions must be performed:

1. Install FinePointe Software
2. Configure Microsoft SQL Server
3. Configure FinePointe Server
4. Connect the FinePointe license dongle (Sentinel HASP HL dongle) to the Controller server PC
5. Install FinePointe license file
6. **Note:** For upgrades to systems with existing datasets – Upgrade All Studies

Note: *If upgrading from FinePointe version 2.3 or earlier version please first: Uninstall the previous version of the application prior to proceeding with the new install.*

PLANNING YOUR INSTALLATION

Important Note: Upgrading will affect custom modifications made to Profile XML files saved within the Profiles folder (example: Algorithm.XML file that has been modified to support custom analysis requirements for unique applications). Any changes made to the Profile XML files were likely done with the assistance of the Technical Support staff.

The FinePointe Setup wizard will make a backup copy of all Profile XML files and save them to a Backup folder within the Profile folder, before overwriting the existing XML files. Therefore, if any Profile XML files have had customizations, those customizations will be retained and will be available in the Backup folder.

If you have reason to believe you have had customizations made to any Profile XML files it is recommended that you contact Technical Support to get assistance determining if your customization(s) need to be added to the new V2.8.0 Profile XML files. In many cases previous customizations made to Profile XML files to support unique applications have been integrated into the new V2.8.0 Profile XML files.

The FinePointe installation program includes 4 installation options.

- Client and Server Installation, with SQL Server (*Installation of SQL Server can take several minutes*)
- Client and Server Installation (*Recommend for users upgrading from a previous version for FinePointe*)
- Client Only Installation
- Isolated Station Installation

New FinePointe users should select the first (default) option, *Client and Server Installation, with SQL Server*, when installing software on the primary computer used for the system. This option includes FinePointe Station (data acquisition), Review (data management and reporting), and Controller (SQL database for report processing, data storage, system security, and licensing). Please note; if using Windows 10, Microsoft .NET Framework v3.5 must be installed to support SQL Server 2014 SP2 Standard Edition that comes with FinePointe 2.8.x (refer to **Appendix 1**).

The *Client and Server Installation* option is necessary when connecting to a preexisting SQL database located either on the primary computer being used for data acquisition or on the network via remote connection. This option is recommended when setting up a FinePointe Member Server. Member Servers enable you to connect additional data acquisition Stations to your Controller. DSI also recommends that users upgrading from prior versions of FinePointe use the *Client and Server Installation* when installing the latest version on the controller server. This will permit FinePointe v2.8.x to be configured using the SQL database installed with the previous version of the software, SQL Server 2012 Express. FinePointe v2.8.x comes with SQL Server 2014 SP2 Standard Edition, which removes the data storage limitation imposed by the Express editions. Using the Client and Server Installation option will also permit you to update the previous version of SQL Server to the 2014 Standard Edition and migrate your data to the new database once the installation is complete. Refer to **Appendix 2** to learn how to upgrade SQL Server.

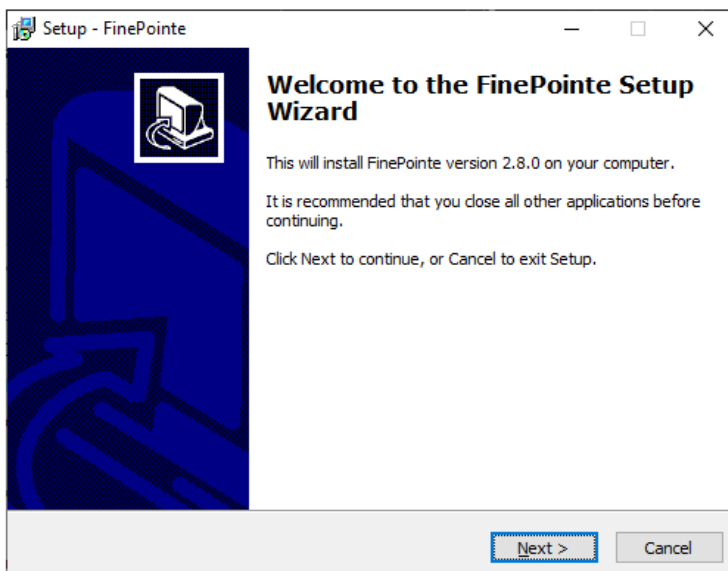
The *Client Only Installation* is intended for users licensed to connect to the FinePointe Controller (SQL database) for review of data from a remote computer (e.g. office computer). Data acquisition is not intended to be performed on computers with this option installed. The remote computer must be connected to the same network as the FinePointe Controller.

The *Isolated Station Installation* is used to allow licensed users to acquire data when the data acquisition computer cannot be connected to the network. In this case, acquired data must be manually transferred (e.g. via flash drive) to a FinePointe Server from a Client on the network and logged into the FinePointe Controller.

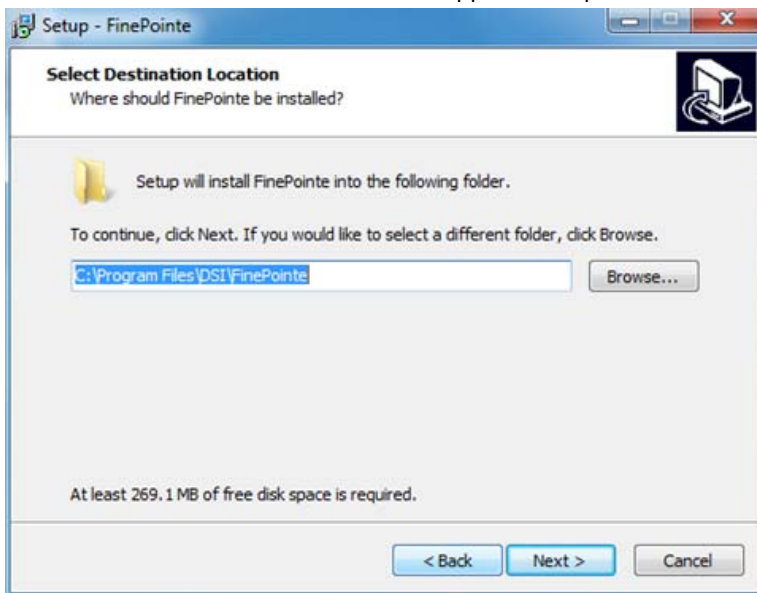
FINEPOINTE INSTALLATION

This section covers the installation procedure for a standalone FinePointe system for data acquisition and analysis.

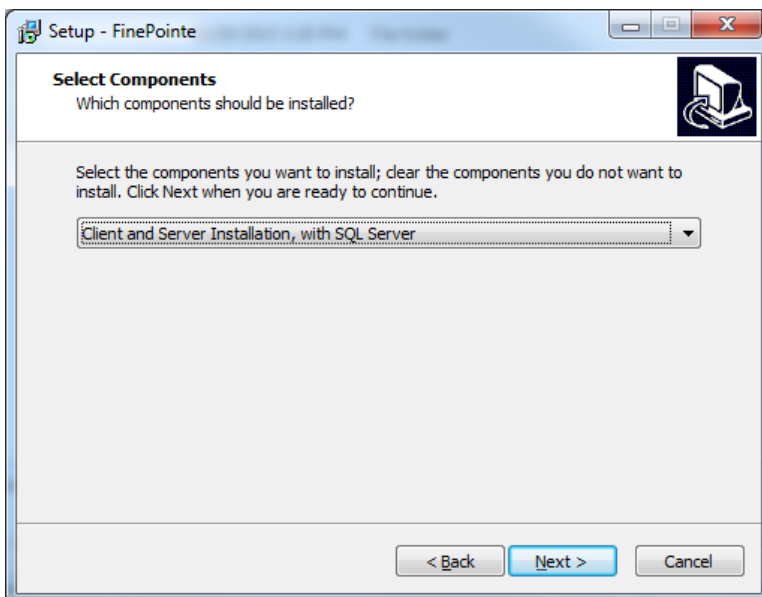
1. Turn on your PC and log in as an administrator.
2. Find the FinePointe installation software, generally provided on a DSI flash drive. For the purposes of this description, the flash drive is mapped to drive F: when plugged into your PC. Your system may map it to a different drive, and if it does, replace the F: with that drive letter.
3. Double-click on the file named **FinePointeSetup.exe**.
4. The *FinePointe Setup Wizard* will appear. Click **Next**.



5. The *Select Installation Folder* screen will appear. Accept the defaults and click **Next**.

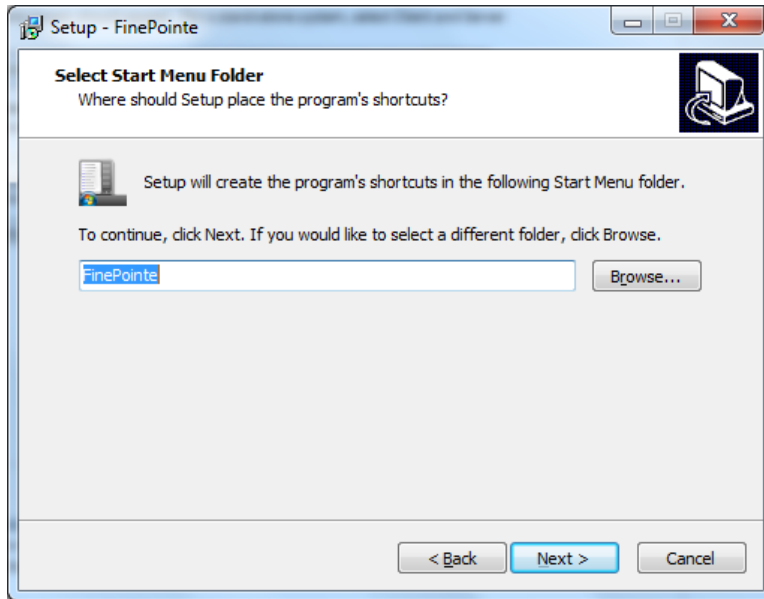


6. The *Select Components* screen will appear. For a New Installation of a stand-alone system, select **Client and Server Installation, with SQL Server**. Note: If upgrading an existing FinePointe system, select **Client and Server Installation**. Click **Next**.

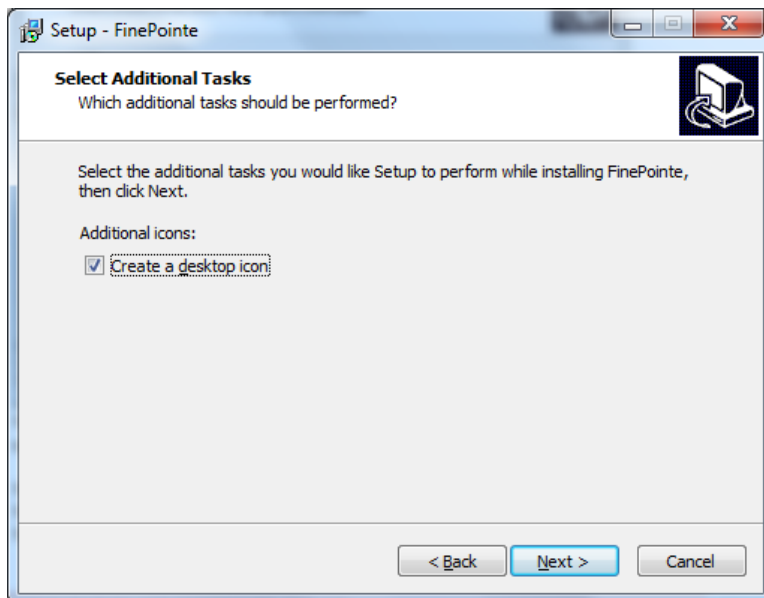


Note: Above screen is an example from a full new installation including SQL Server

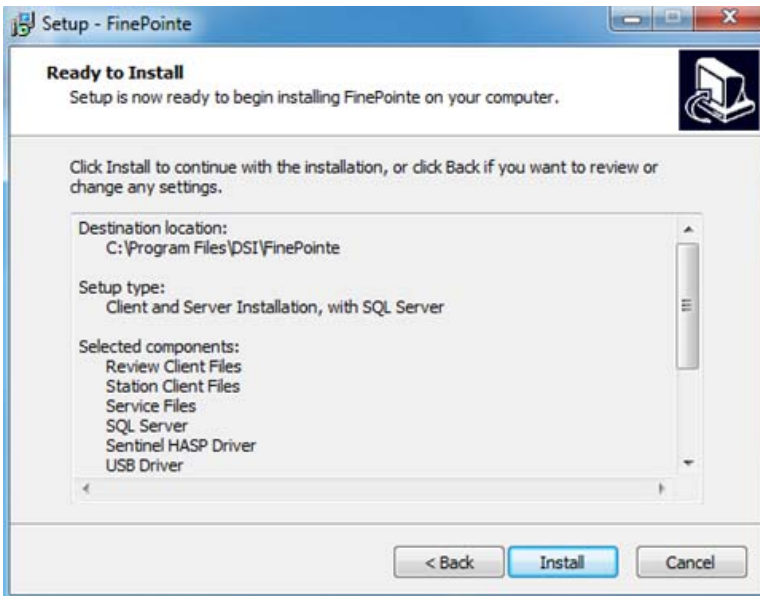
7. The *Select Start Menu Folder* screen will appear. By default, FinePointe software appears within the **Start Menu** within a **FinePointe** folder. Click **Next**.



8. The *Select Additional Tasks* screen will appear. If desired, create a shortcut icon on the desktop to start FinePointe. Click **Next**.

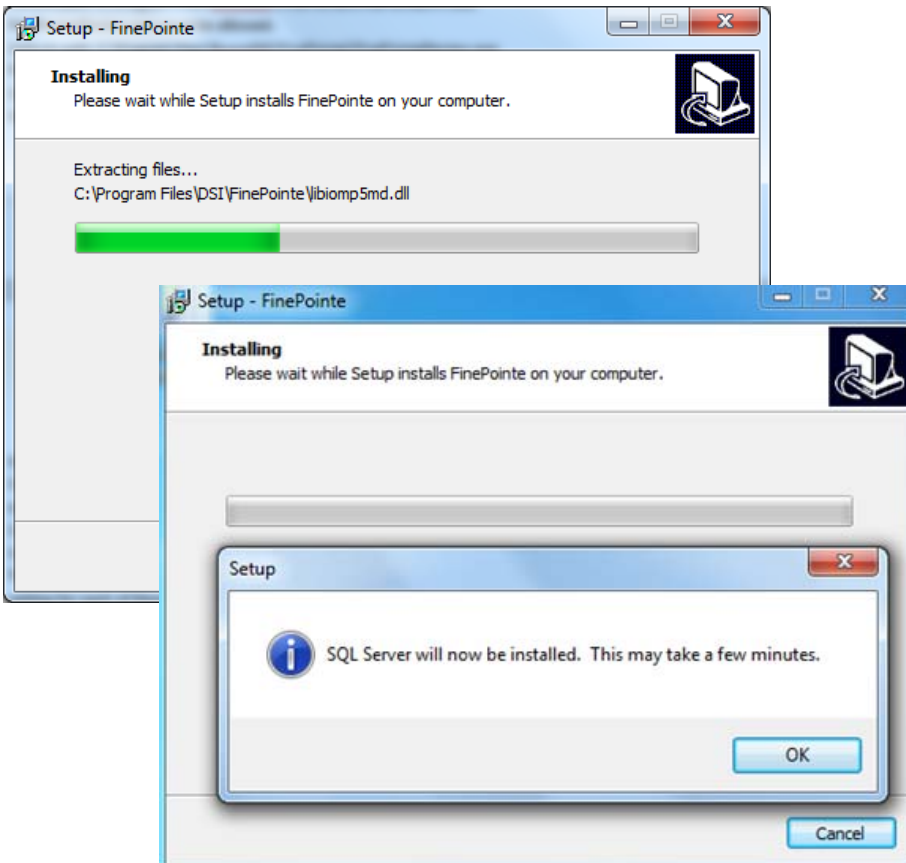


9. The *Ready to Install* screen will appear. Review the selected options, then click **Install**.



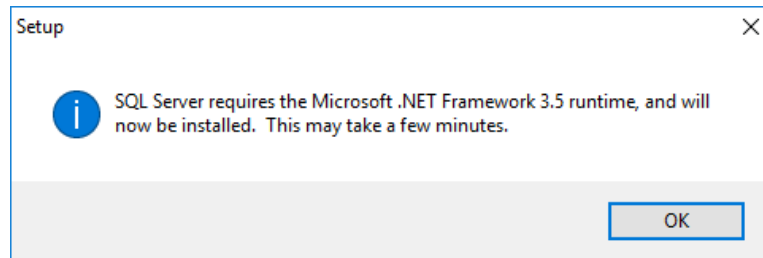
Note: Above screen is an example from a full new installation including SQL Server

10. The FinePointe installation will begin, followed by SQL Server installation if a complete new installation is being performed. *Note: Installation of SQL Server can take several minutes.*

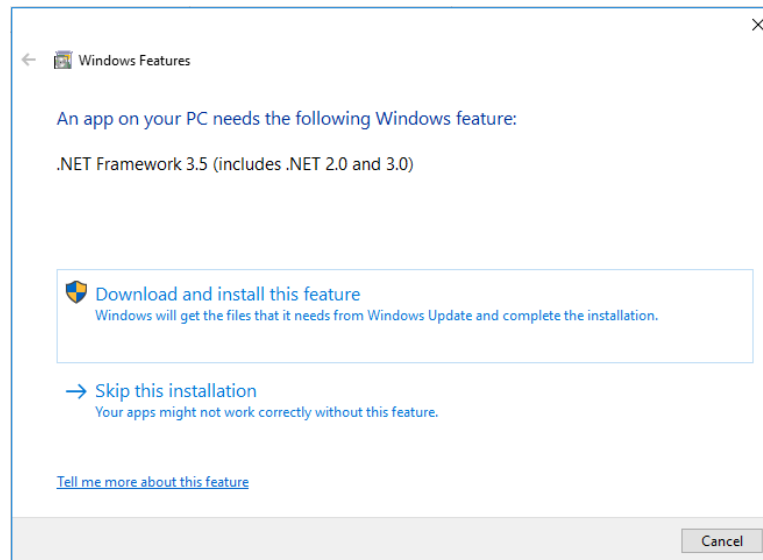


11. For the *Microsoft .NET Framework 3.5 runtime* you may see the following messages: (please refer to Appendix 1 for instructions how to update the Windows Update service)

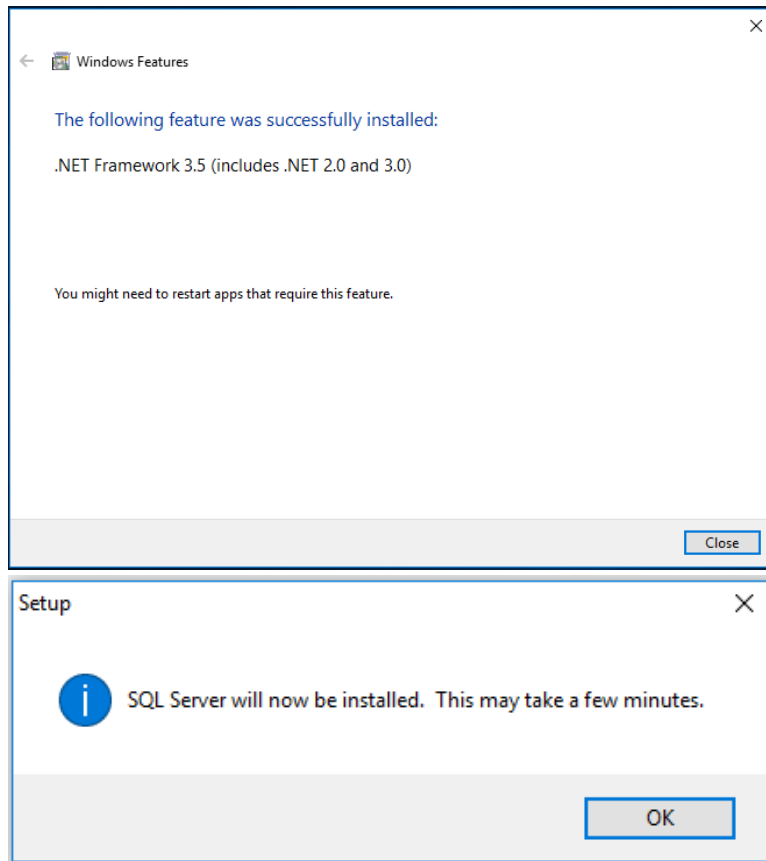
- a. Click **OK** to install the Framework.



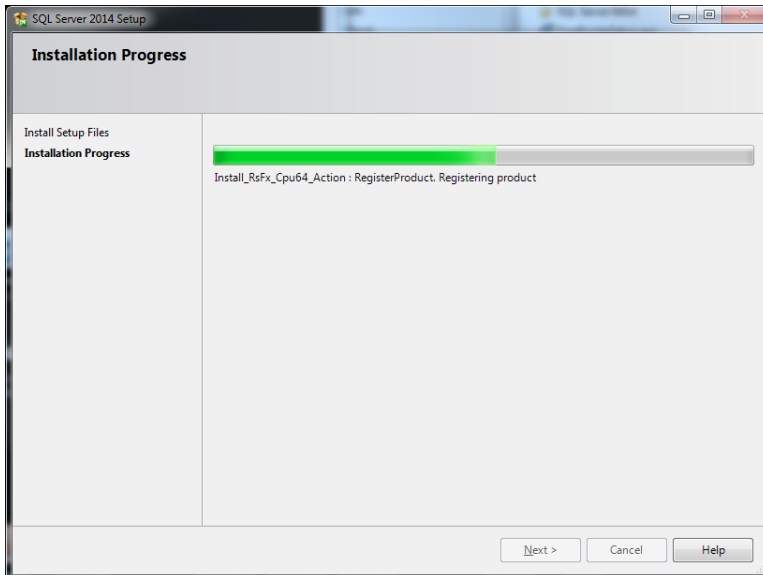
- b. Click **Download and install this feature**.



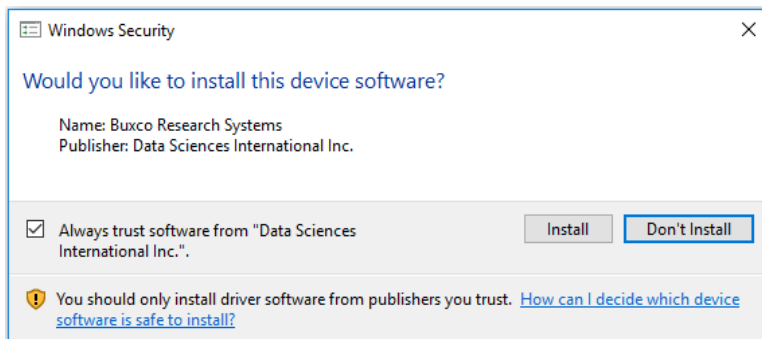
- c. Select **Close** when the Framework is installed.



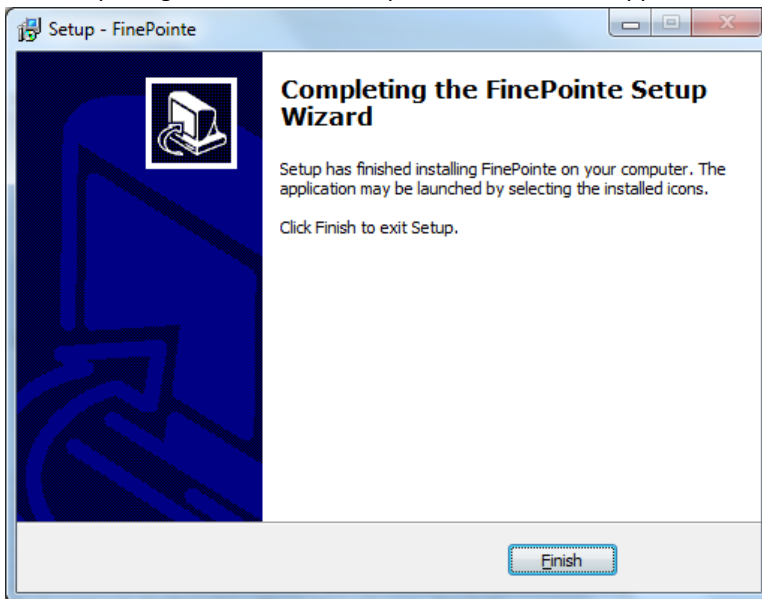
12. If **Client and Server Installation, with SQL Server** is chosen as the installation option, Microsoft SQL Server 2014 will automatically install. *Note: Installation of SQL Server can take several minutes.*



13. If prompted to install the device software from Data Sciences International, click **Install**.



14. The *Completing the FinePointe Setup Wizard* screen will appear. Click **Finish**.



FinePointe License Dongle File Installation –

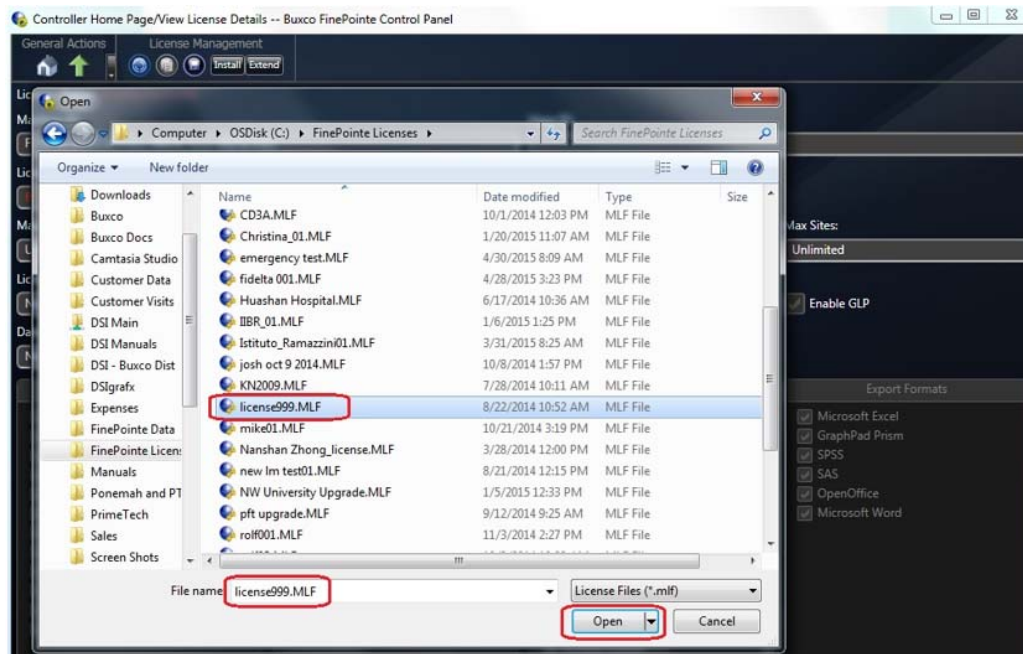
The following steps are required to perform the initial install or upgrade of a FinePointe license dongle using a license upgrade file. The purpose of the step is to enable a new version of FinePointe, or to add new features to an existing FinePointe system, or to install a Temporary Finepointe License. Typically the license file is supplied on the USB flash drive which also contains the FinePointe software. It will be located within the root director of the flash drive with the “.mlf” extension.

15. Connect the FinePointe license dongle (Sentinel HASP HL dongle) to an available USB port located in a safe location.
16. Copy the license file to the Windows desktop of the computer that has the FinePointe Controller program installed. The file will be located within the root director of the flash drive with the “.mlf” extension.
17. Launch FinePointe Control Panel and log in using the Windows Administrator account.
18. If this is a new installation do the “FINEPOINTE SERVER CONFIGURATION” before going to the next step.
19. Click the “View License Details” button. The view will take a few seconds to open while it retrieves the license information.

20. The attached dongle information should be displayed. This includes the HASP ID, FinePointe version, and enabled options.
21. In the “License Management” section on the top tool bar, click the “Install” button.

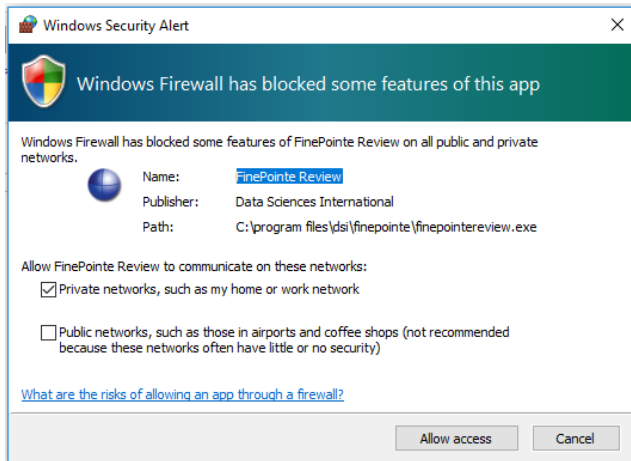


22. A Windows file browser dialog should open. Navigate to the Windows desktop and select the license file you copied there in step #1.



23. Click the “Open” button.
24. The license file should install and a success message should appear.
25. Close the message.
26. In the “License Management” section on the top tool bar, select the “Re-read license” button.
27. After a few seconds, the displayed license information will refresh. The new options that were added by the upgrade should appear.
28. Verify the new version and /or features have been added.
29. Close the FinePointe Control Panel.

- When first running the application, select **Allow access** when prompted by the Security Alert.

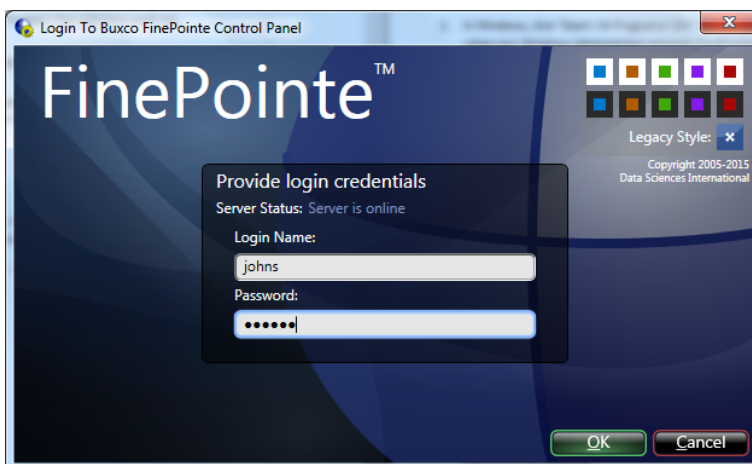


This completes the FinePointe software and license file installation.

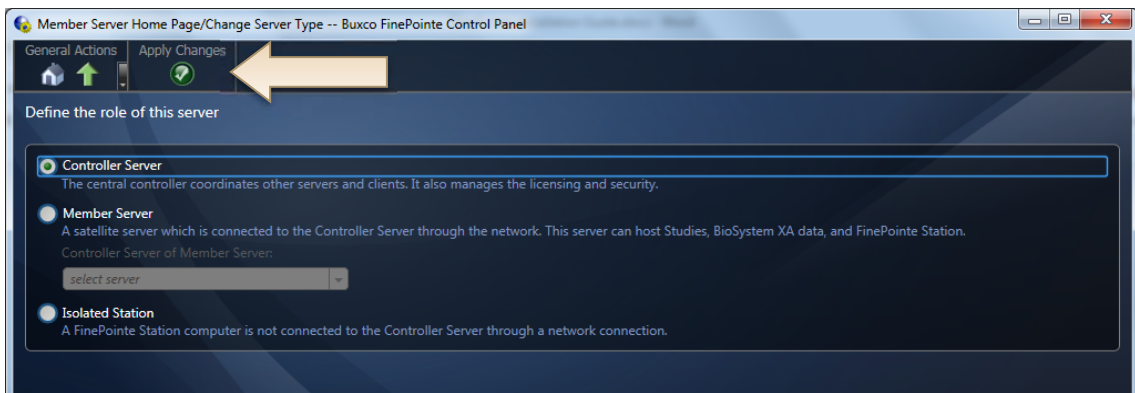
FINEPOINTE SERVER CONFIGURATION

The following details the process to configure the FinePointe Server for the workstation based on the installation type chosen for the workstation.

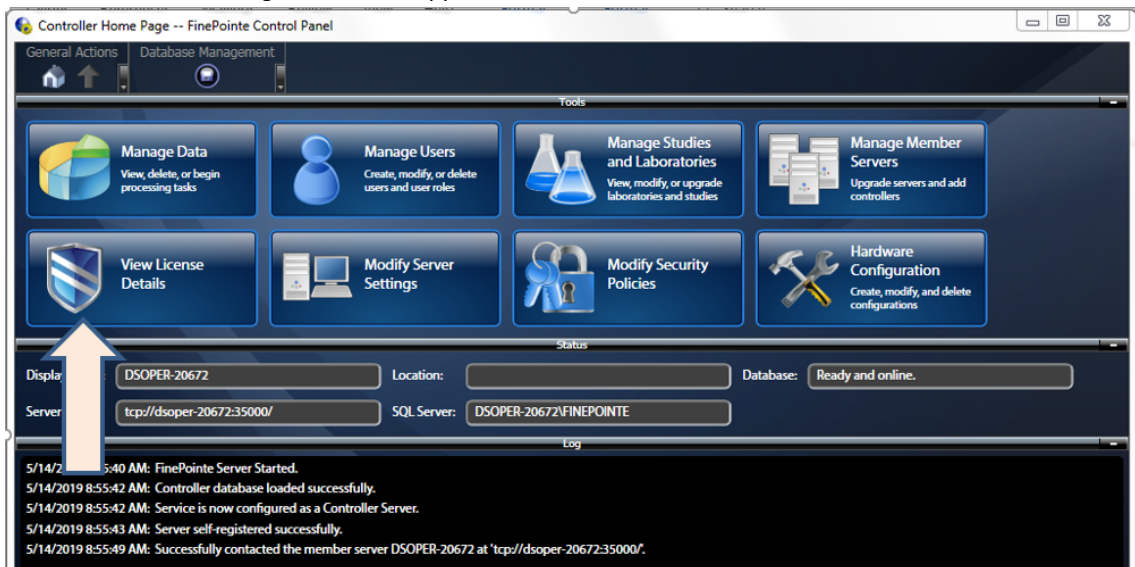
- In Windows, click **Start | All Programs | FinePointe** and launch the **FinePointe Control Panel** application.
- Log in using your *Windows Administrator* account. *FinePointe Control Panel* can only be launched by Windows Administrators.



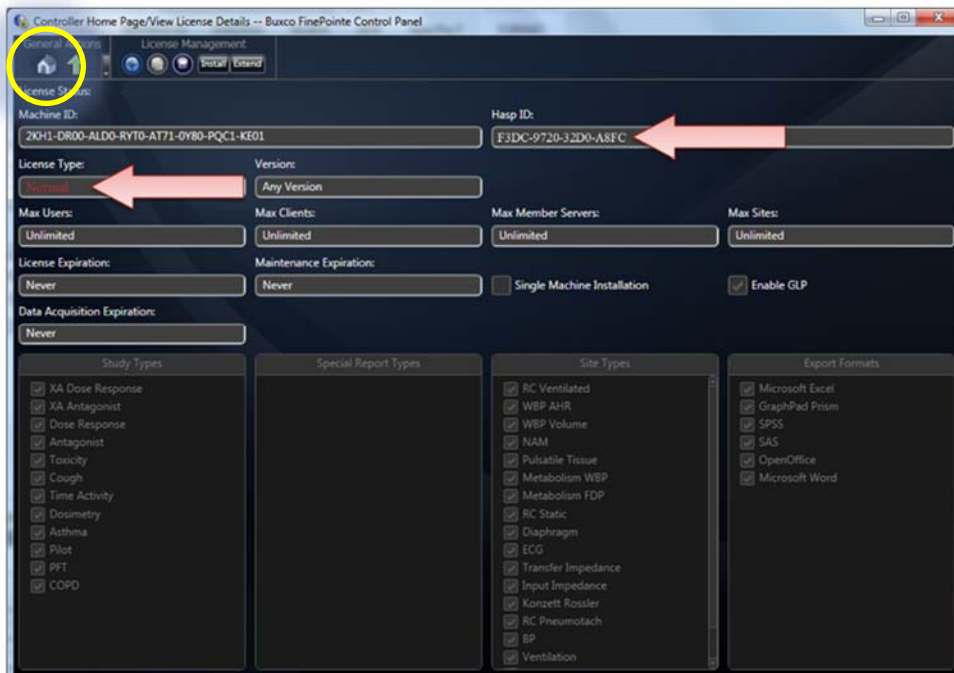
- The *Change Server Type* screen will appear.
 - If the *Client and Server Installation, with SQL Server* option was selected, select **Controller Server**.
 - If *Client and Server Installation* was selected, select Member Server.
 - If *Isolated Station Installation* was selected, select Isolated Station.
 - Once the appropriate selection has been made, click **Apply Changes**.



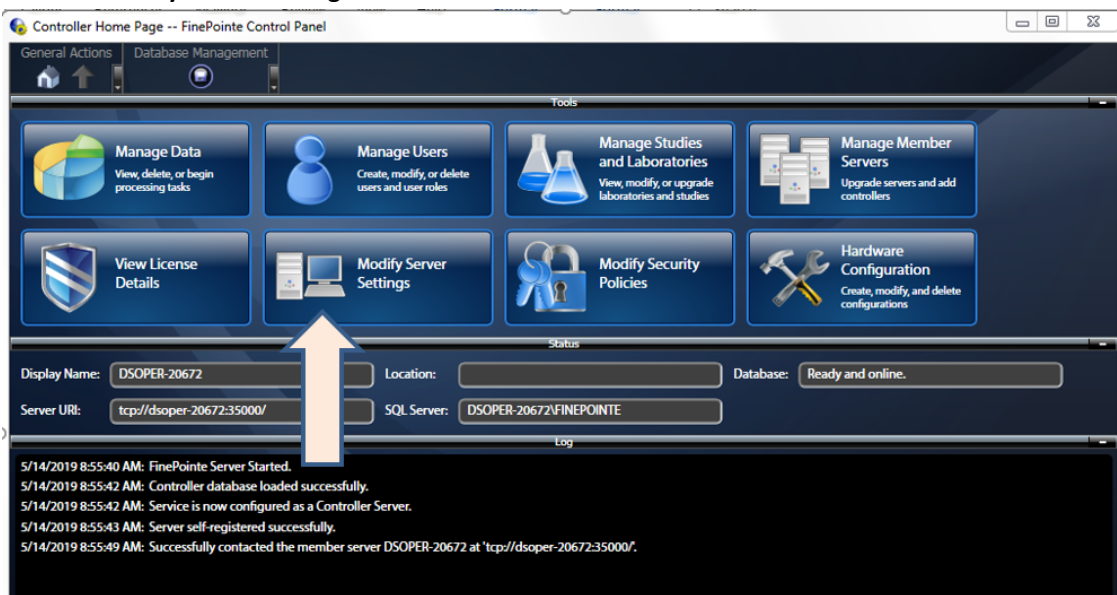
4. The *Controller Home Page* screen will appear. Click the **View License Details** button.



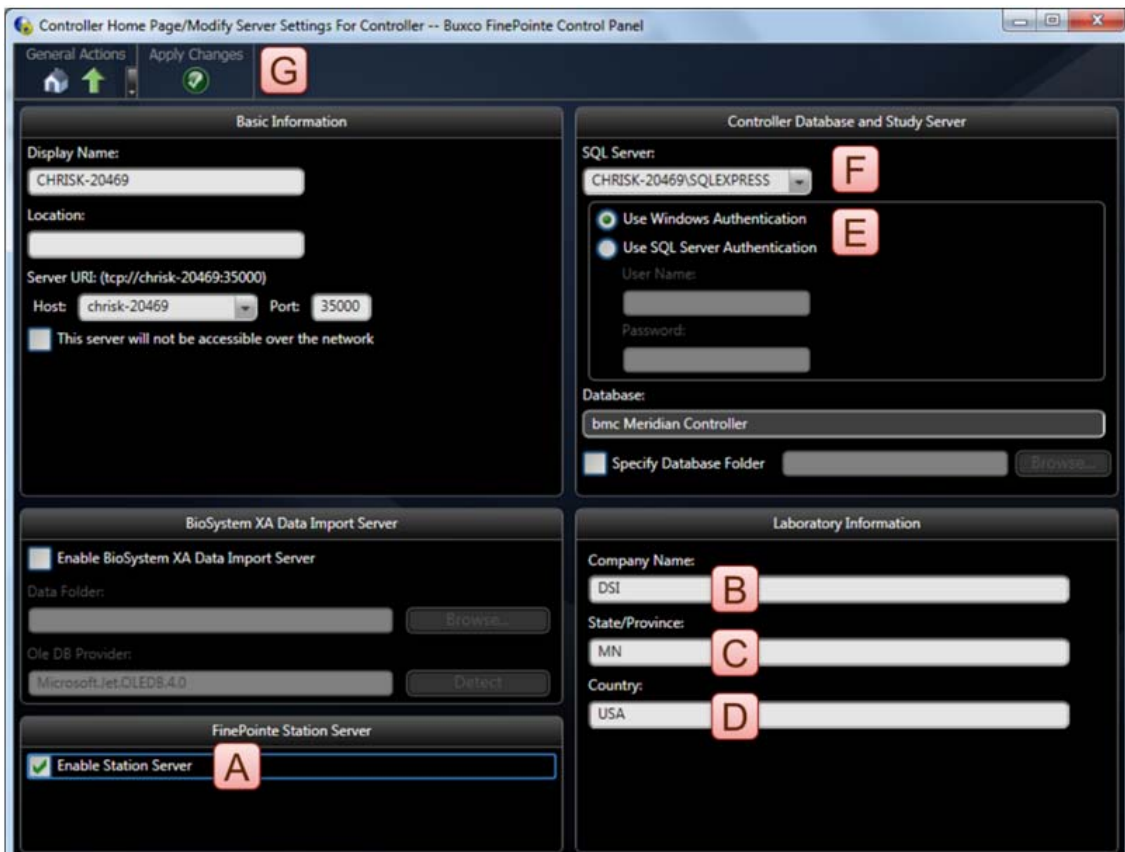
- The *License Details* screen will open. Confirm the **License Type** is **Normal**. An ID number should appear in the **HASP ID** field. No warnings or errors should appear. If there are any issues, please contact your DSI representative. If the settings are valid, click the **Home** button to return to the *Controller Home* page.



- Click the **Modify Server Settings** button.



7. The *Modify Server Settings* screen will open. Configure the following items:
 - a. Select the **Enable Station Server** checkbox if data acquisition is desired from this workstation (i.e. it is not a *Client only* installation).
 - b. Enter your **Company Name**.
 - c. Enter your **State or Province**.
 - d. Enter your **Country**.
 - e. Select **Use Windows Authentication**
 - f. Select the SQL server from the **SQL Server:** dropdown menu. This should be the same SQL server name that was used when installing SQL server earlier. The default SQL Server name is "*<computer name>\FINEPOINTE*".
If the dropdown menu is empty, wait about 5 seconds and try again.
 - g. Once all items above are configured, click the **Apply Changes** button.



8. A confirmation dialog will appear asking if you would like to create a new controller database. Click **Yes**.



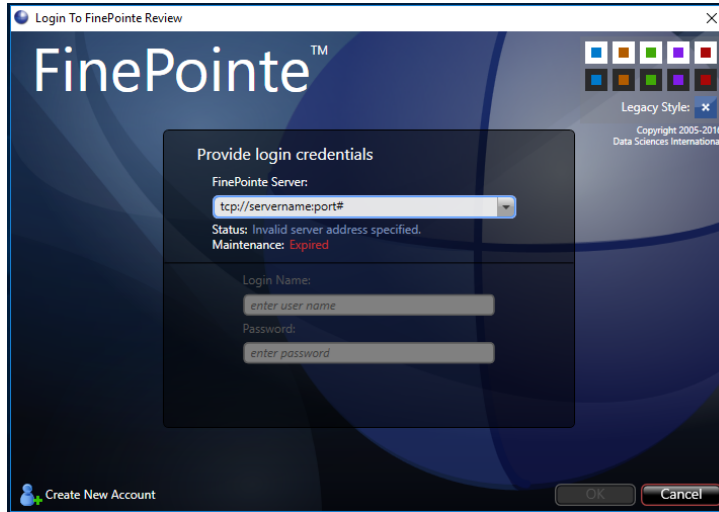
9. After a few seconds, the *Update Successful* message will appear. Click the **OK** to continue.



10. Next, click the **Home** button. The *Controller Home* page will appear. All options in the **Tools** section should be active.

FINEPOINTE CLIENT CONFIGURATION

1. Select the **Windows Start menu | All Programs | FinePointe** to launch the **FinePointe** application.

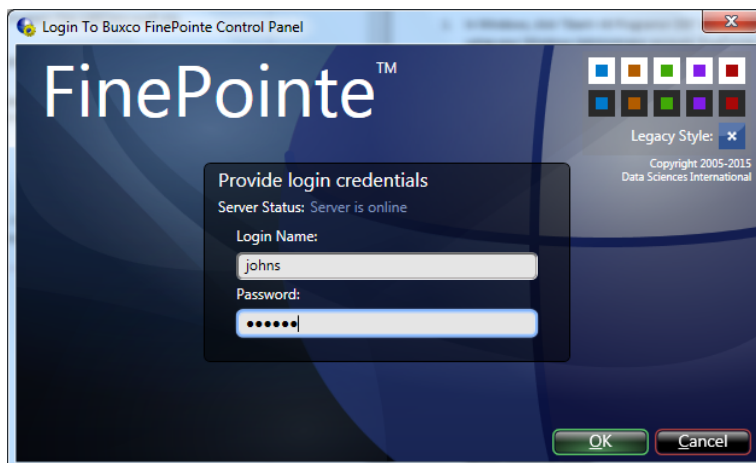


2. The first time FinePointe connects to a server, the server name and port number must be manual entered (TCP://servername:port#) or select the server name (PC name) from the drop down list.
3. Select the **Create New Account** button or enter the user credentials to log into the server.

UPGRADE ALL STUDIES – FOR UPGRADES TO SYSTEMS WITH EXISTING STUDIES

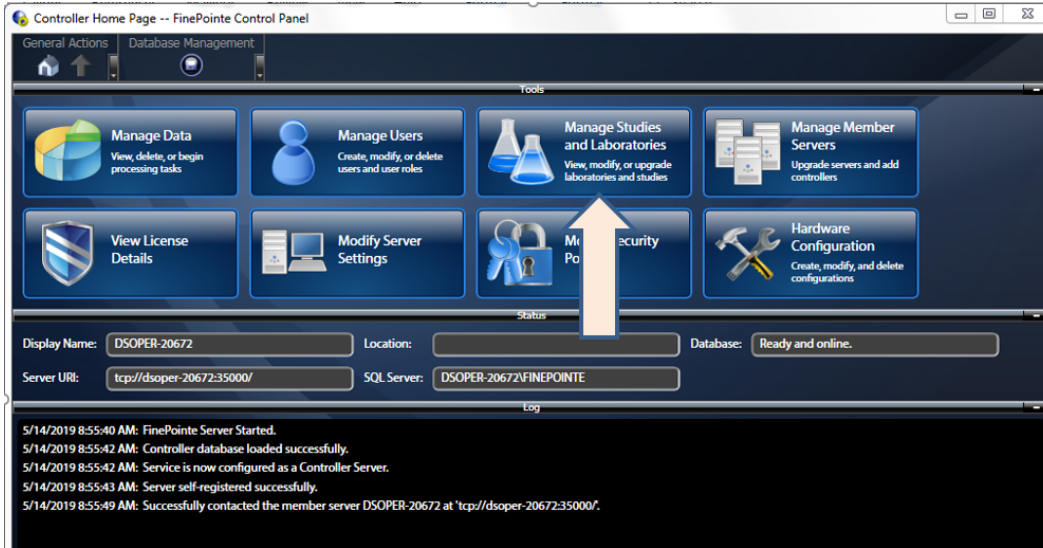
The following details the process to *Upgrade All Studies* after completing the installation process.

1. In Windows, click **Start | All Programs | FinePointe** and launch the **FinePointe Control Panel** application.
2. Log in using your *Windows Administrator* account. *FinePointe Control Panel* can only be launched by Windows Administrators.

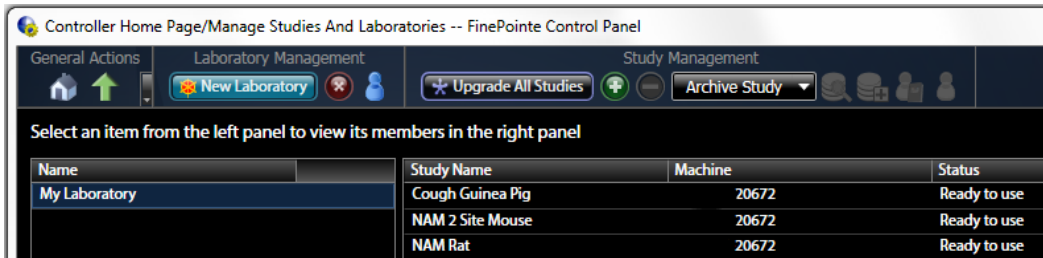


The *Controller Home Page* screen will appear. Click the **View License Details** button.

3. The *Controller Home Page* screen will appear. Click the **Manage Studies and Laboratories** button.




4. Click on the **Upgrade All Studies** button. Depending on the number and size of the existing Studies this process can take a few minutes. When the process is completed the system will return a “Ready to use” message under the Status column for each study.




APPENDIX 1 – INSTALLING .NET 3.5 ON WINDOWS 10

The install package will automatically install the .NET Framework 3.5. Note that the Windows Update Service must be turned ON prior to installation and you must have an Internet connection.

To enable the Windows Update service:

1. Right-click on the  icon.
2. Right-click Computer Management
3. Under **Services and Applications**, select the Services log.
4. Ensure the *Windows Update* service is **Enabled**.
5. You may have to configure the properties and change the *Startup type* to **Automatic**.
6. Apply the setting and then you can manually **Start** the service.

To manually enable the .NET Framework 3.5 through Control Panel, follow the steps below. This option also requires an Internet connection.

1. Press the Windows key  on your keyboard, type *Windows Features*, and press **<Enter>**. This brings up the **Turn Windows features on or off** dialog box. Alternately, open Control Panel, click on the Programs items, and then click on “Turn Windows features on or off” under Programs and Features.
2. Select the **.NET Framework 3.5 (includes .NET 2.0 and 3.0)** check box, select **OK**, and reboot your computer if prompted.

APPENDIX 2 – MIGRATING DATA TO SQL SERVER 2014

This section covers installing SQL Server 2014 with Tools 64 Bit.

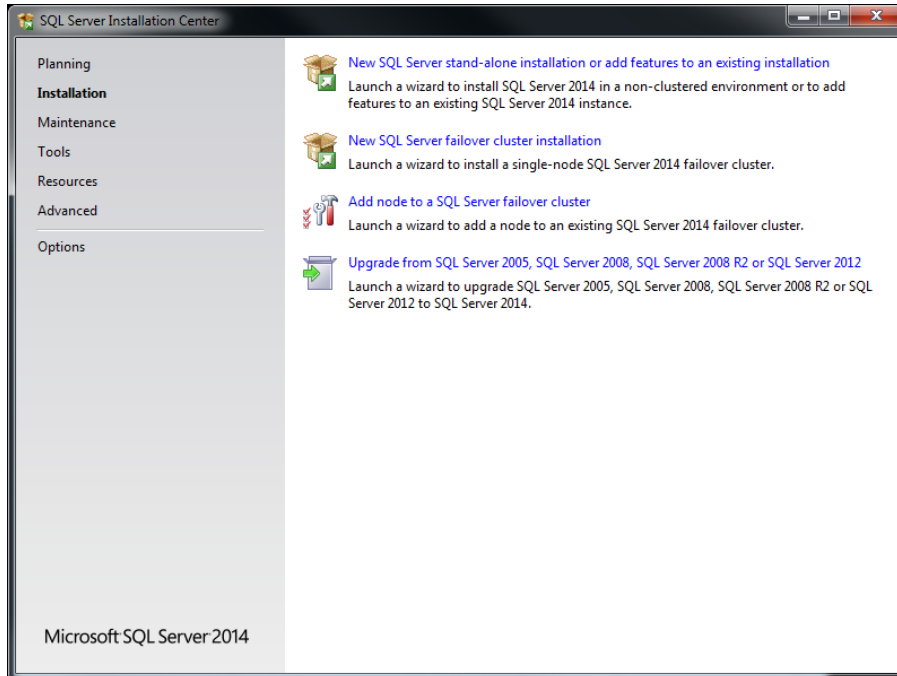


CAUTION: It is strongly recommended to backup the existing database prior to proceeding with this procedure as a precautionary measure.

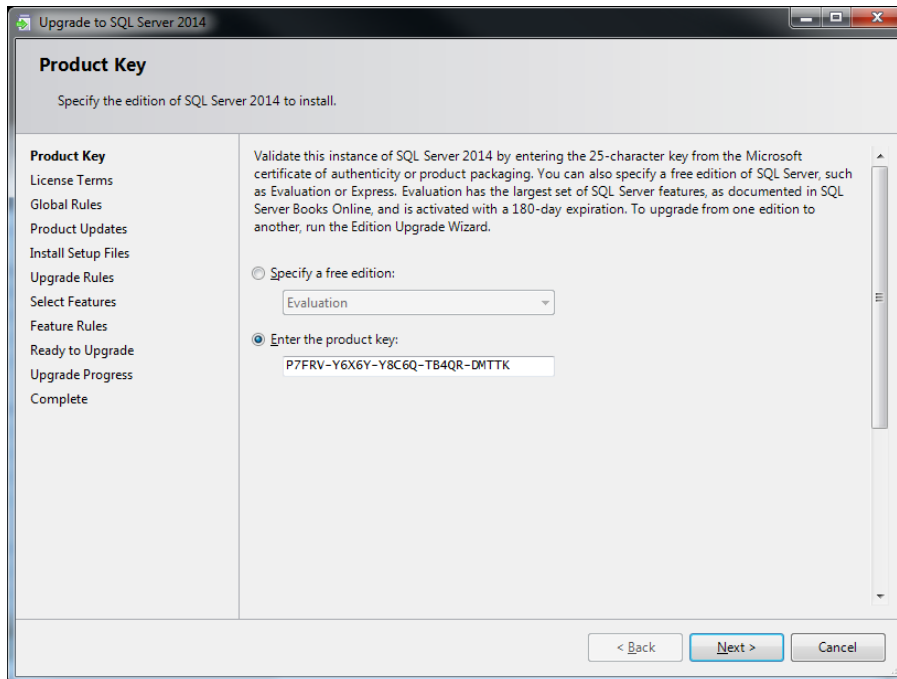
1. Turn on your PC and log in as an administrator.
2. Find the SQL Server 2014 installation software, generally provided on a DSI flash drive. For the purposes of this description the flash drive is mapped to drive F: when plugged into your PC. Your system may map it to a different drive, and if it does, replace the F: with that drive letter.
3. Navigate to this folder on the DSI flash drive:
F:\SQL Server 64bit\SQLServer_2014Standard_x64
4. Double-click the file named **Setup.exe**.
5. The files will extract and the *SQL Server Installation Center* will appear.

Please note: the installer might prompt you to download and install Microsoft .NET 4.0 at this point. If so, run the .NET 4.0 installation wizard that appears. It will download and install .NET 4.0 before continuing with the steps listed below. If you are prompted to restart Windows, do so and then start the installation procedure from the beginning.

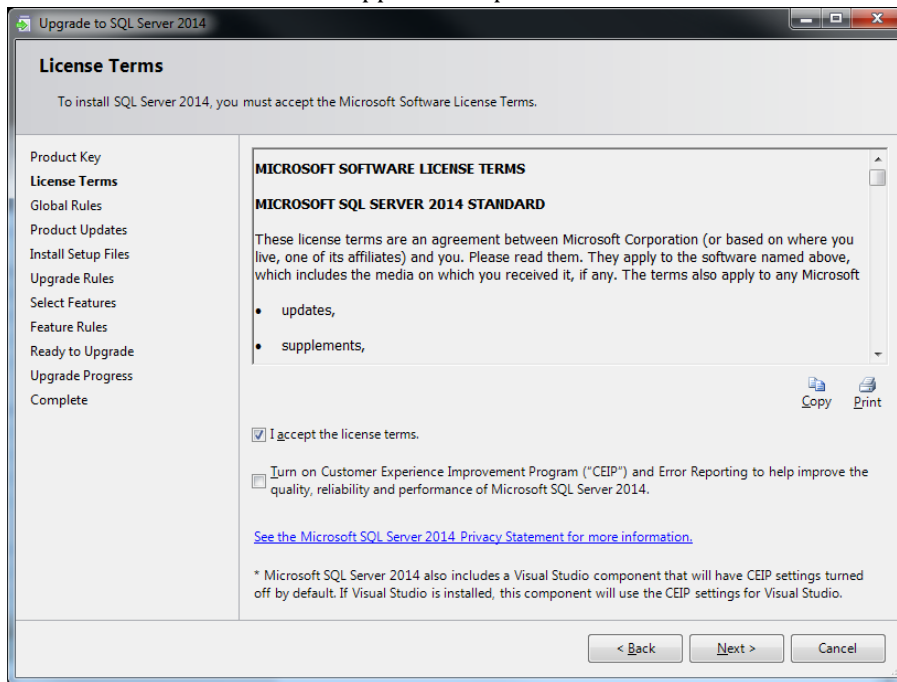
6. The first screen gives you a list of tasks on the left and the details on the right. Select **Installation** from the list on the left, and then click “**Upgrade from SQL Server...**”



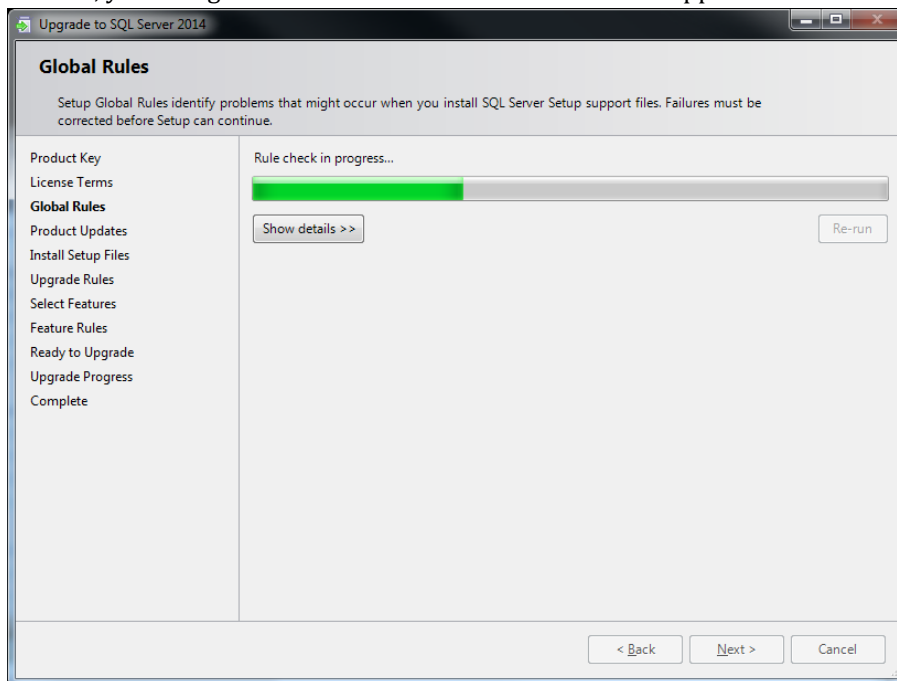
7. The *Product Key* page will display. The key should automatically be entered in this field. Click **Next** to continue.



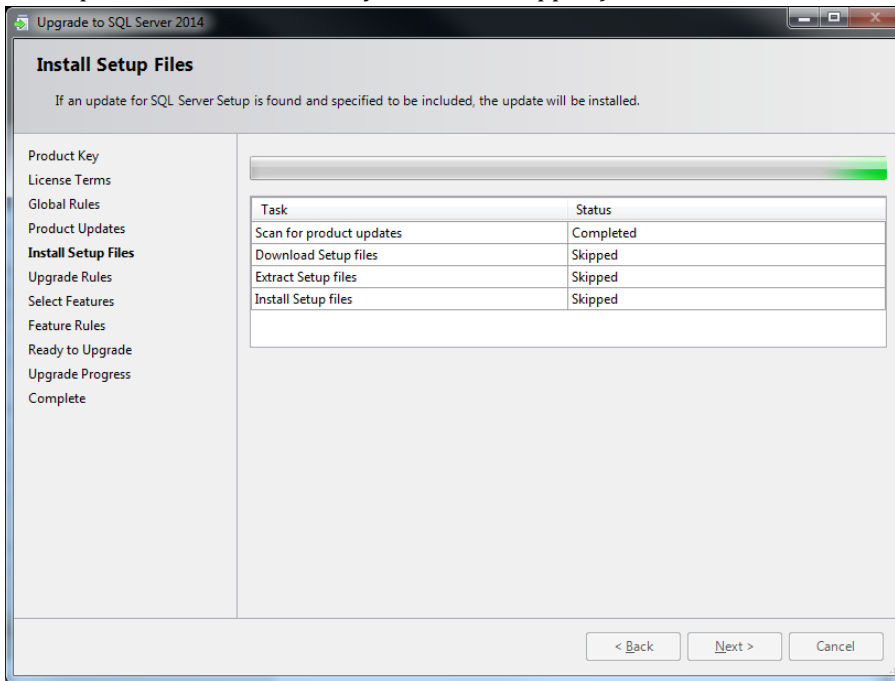
8. The *License Terms* screen will appear. Accept the license terms. Click the **Next** button.



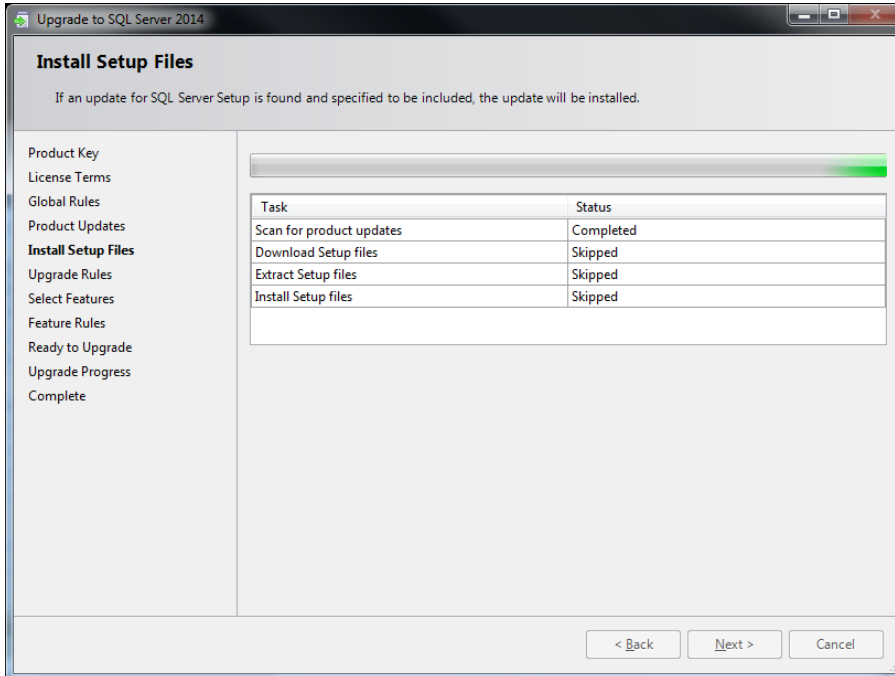
9. The *SQL installer* will check the *Global Rules* for installation. If any errors appear, read the messages and correct the problems as described. If a yellow warning message appears about the Windows firewall, you can ignore it for now. Contact DSI Technical Support if needed.



- The next screen will scan for any recent product updates from Microsoft that are required for the installation. If updates are found, click the **Next** button to download and install them. (If no updates are required, it will indicate they have been skipped.)

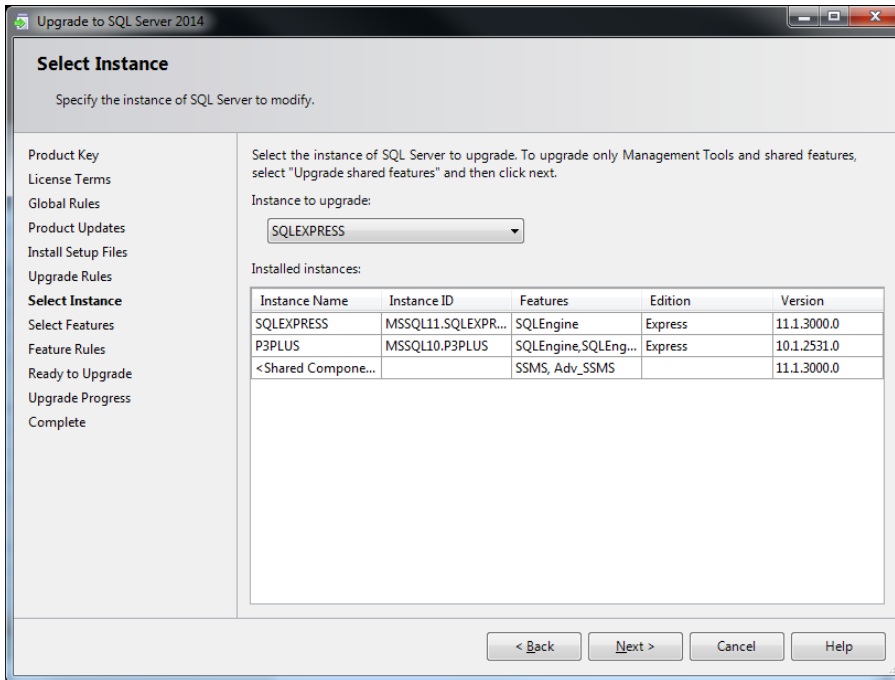


- The Upgrade Rules screen will run to check for any potential issues that may occur while running the Setup. Any failures will need to be addressed prior to moving forward. This should automatically progress to the next screen.

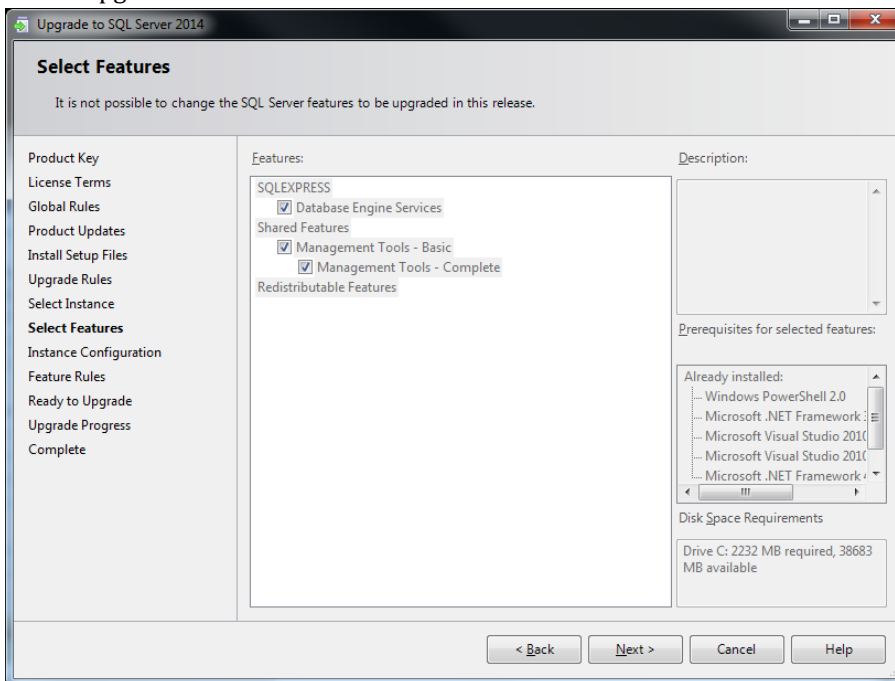


- The *Select Instance* page will appear. Select the SQL instance to upgrade. In this case, select the previous SQL instance used for FinePointe. The default instance name used with previous FinePointe

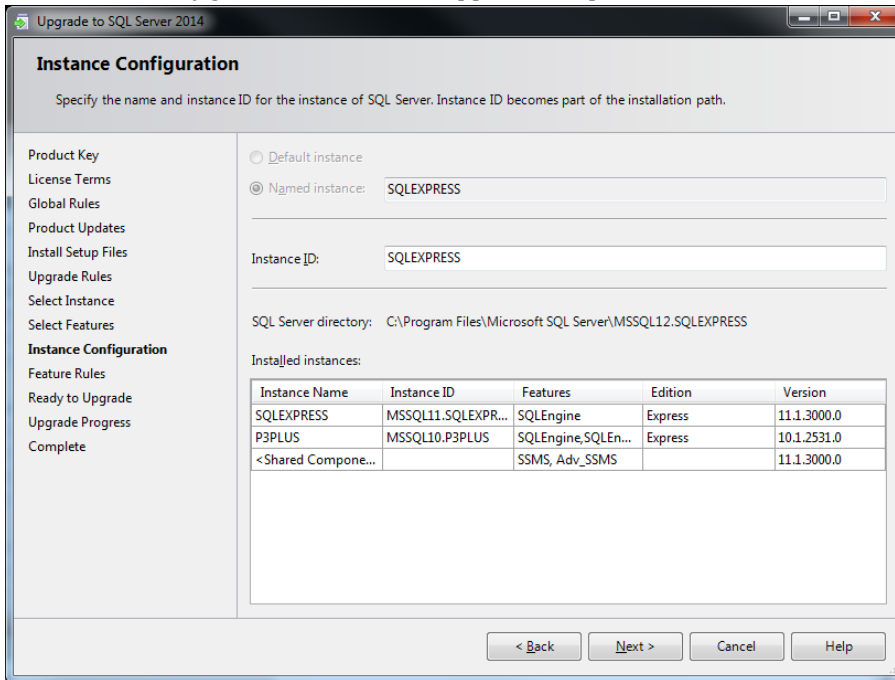
version was **SQLEXPRESS**. Click **Next** to continue.



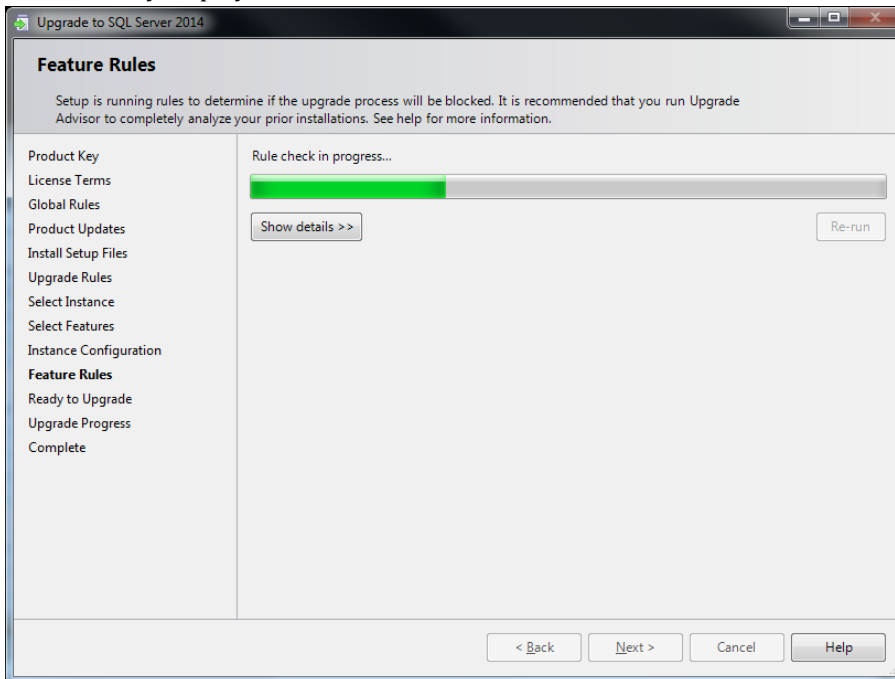
13. The *Feature Selection* screen will display. The *SQL Installer* will automatically select the features that can be upgraded. Click **Next** to continue.



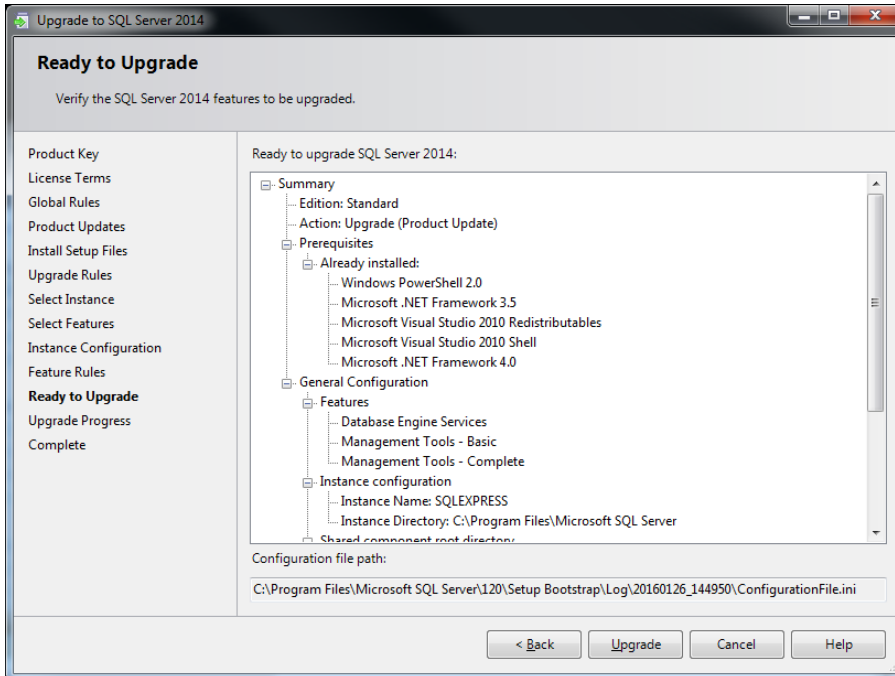
14. The *Instance Configuration* screen will appear. Accept default values and click **Next**.



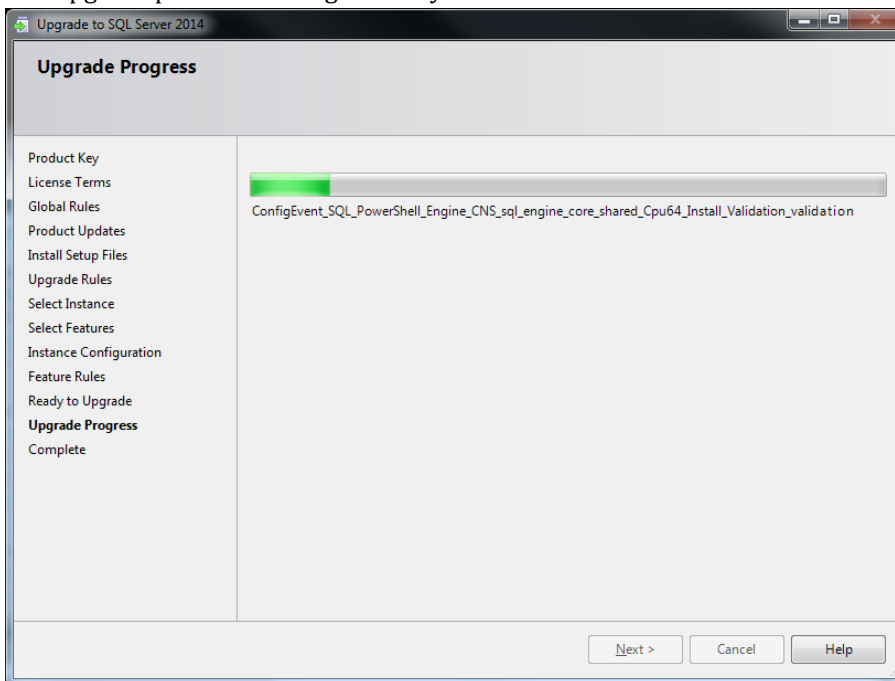
15. The *SQL installer* will check the *Feature Rules*. Once complete, the next page of the wizard should automatically display.



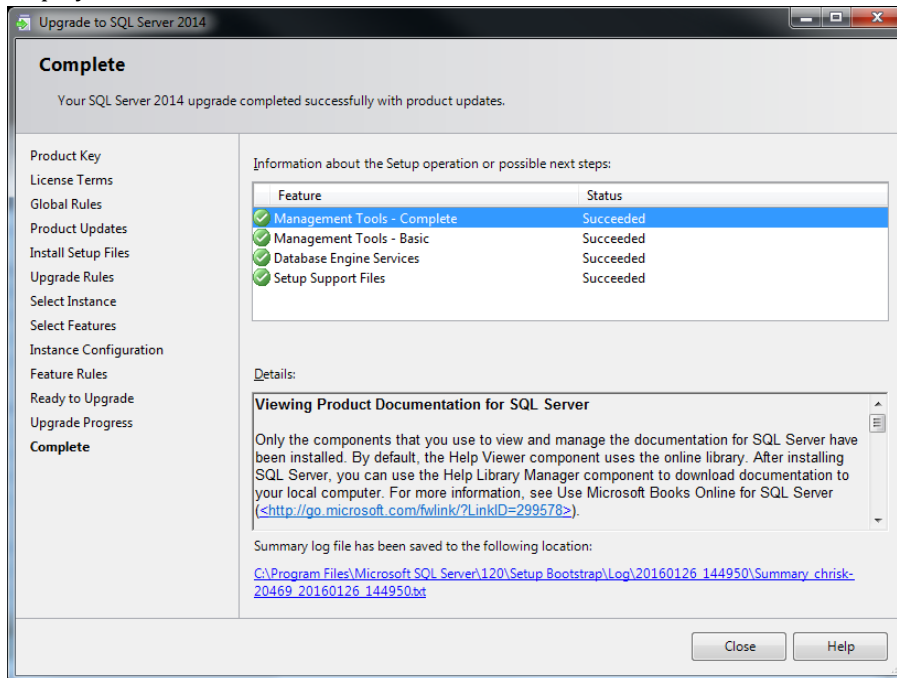
16. The *Ready to Upgrade* screen will display, summarizing the upgrade for final verification. Click **Upgrade** to continue.



17. The upgrade process will begin. It may take 5-10 minutes to install.



18. Once the *SQL Installer* has completed the installation process, a summary of the product updates is displayed. Click **Close**.



APPENDIX 3 – MANUAL DRIVER INSTALLATION

This section covers the installation of the following Windows drivers:

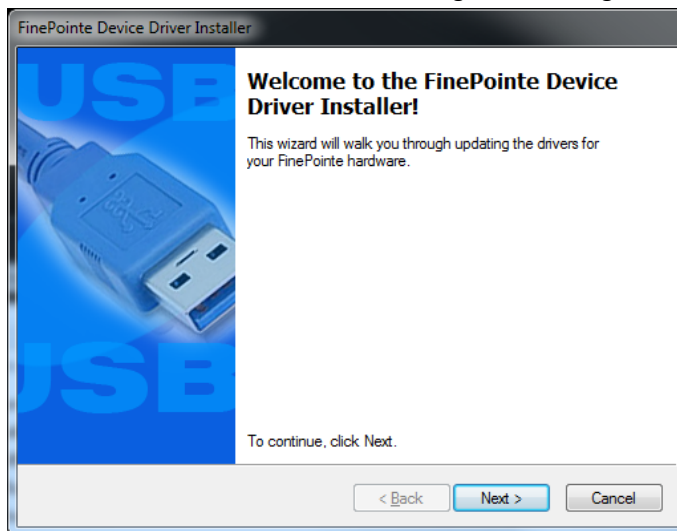
- FinePointe hardware drivers under Windows 7
- FinePointe hardware drivers under Windows 10
- Sentinel HASP HL license dongle drivers

This operation is normally performed by the FinePointe installation, but details are included here for users who may need to troubleshoot installation issues.

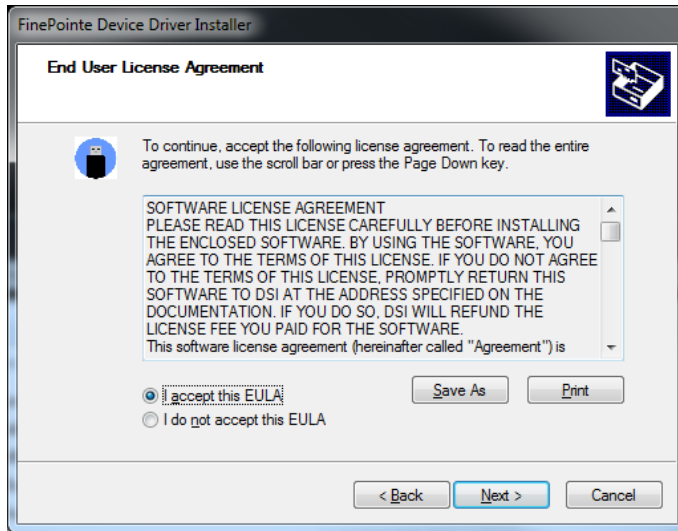
FINEPOINTE HARDWARE DRIVERS UNDER WINDOWS 7

To install FinePointe hardware drivers under Windows 7:

1. Turn on your PC and log in as an administrator.
2. Find the FinePointe installation software, generally provided on a DSI flash drive. For the purposes of this description the flash drive is mapped to drive F: when plugged into your PC. Your system may map it to a different drive, and if it does, replace the F: with that drive letter.
3. Navigate to the driver folder **F:\Drivers\FinePointe\FinePointe 2.8 Drivers** on the DSI flash drive and double-click on **Setup.BAT**.
4. An installation wizard is launched showing the following welcome page. Click **Next**.



5. Accept the license agreement by clicking the radio button associated with *"I accept this EULA"* and click **Next**.



6. After a few seconds, installation will complete and the final wizard page is presented confirming successful installation of the drivers:

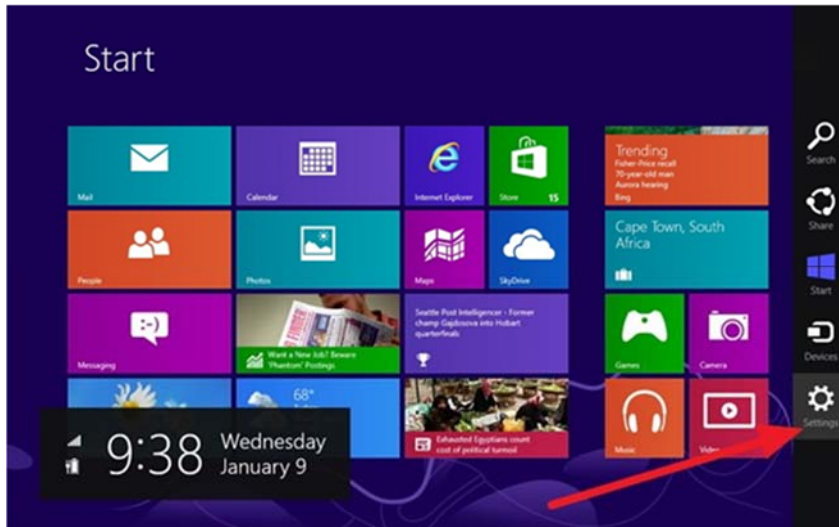


7. Click **Finish**.

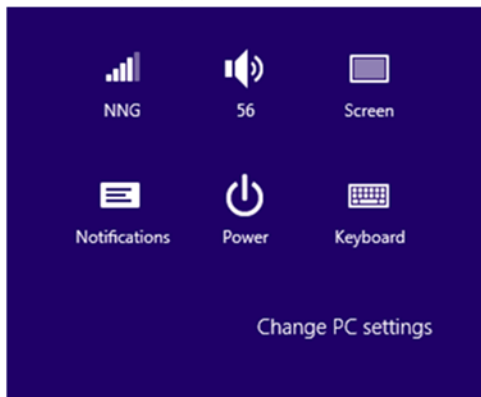
FINEPOINTE HARDWARE DRIVERS UNDER WINDOWS 10

To install FinePointe hardware drivers under Windows 10:

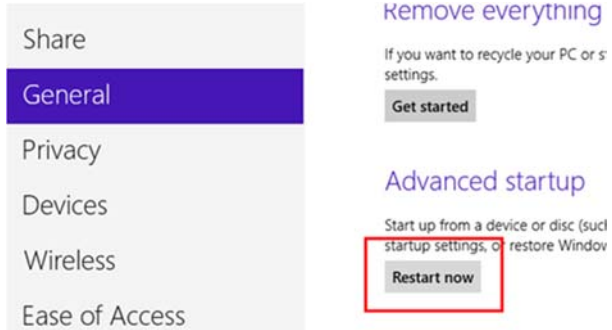
1. Turn on your PC and log in as an administrator.
2. Move the cursor over the top or bottom right corner of the screen and extra options will be displayed on the right side of the screen.
3. Choose the **Settings** option (The icon looks like a gear).



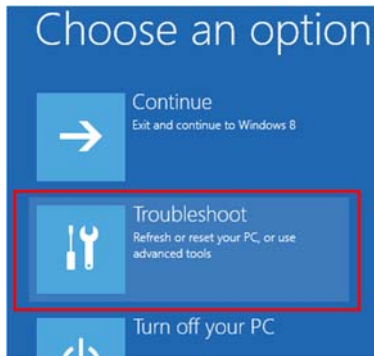
4. Select the **Change PC Setting** option.



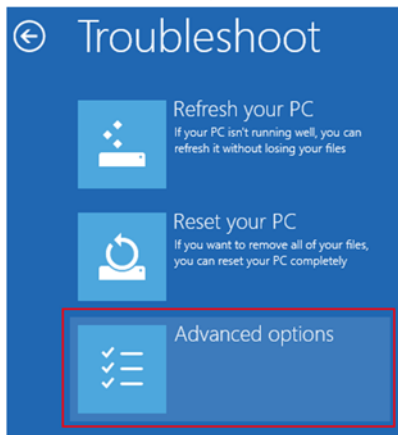
5. Click **General** on the left side and then click **Restart now** on the right under **Advanced Startup**.



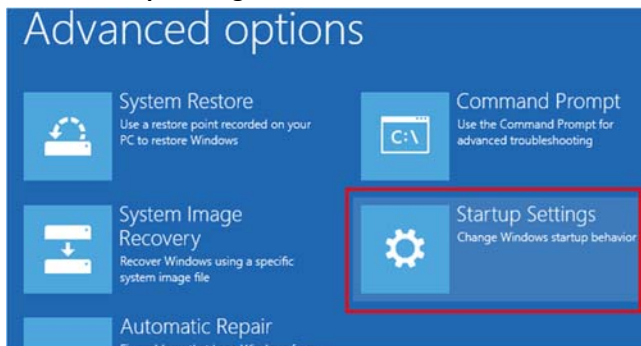
6. Click **Troubleshoot**.



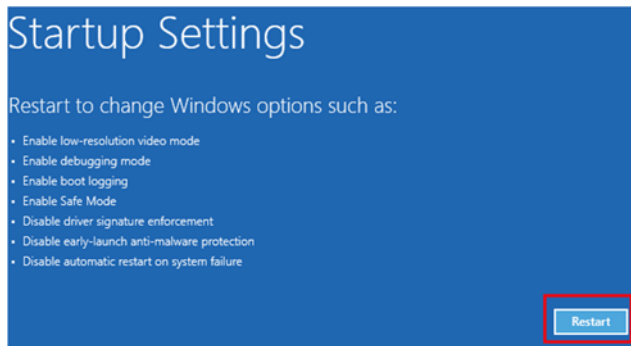
7. Select **Advanced options**.



8. Select **Startup Settings**.



9. Click the **Restart** button.



10. Windows will restart and the following screen will appear. Strike the **<7>** or the **<F7>** key to disable driver signature enforcement. Windows will finish booting.

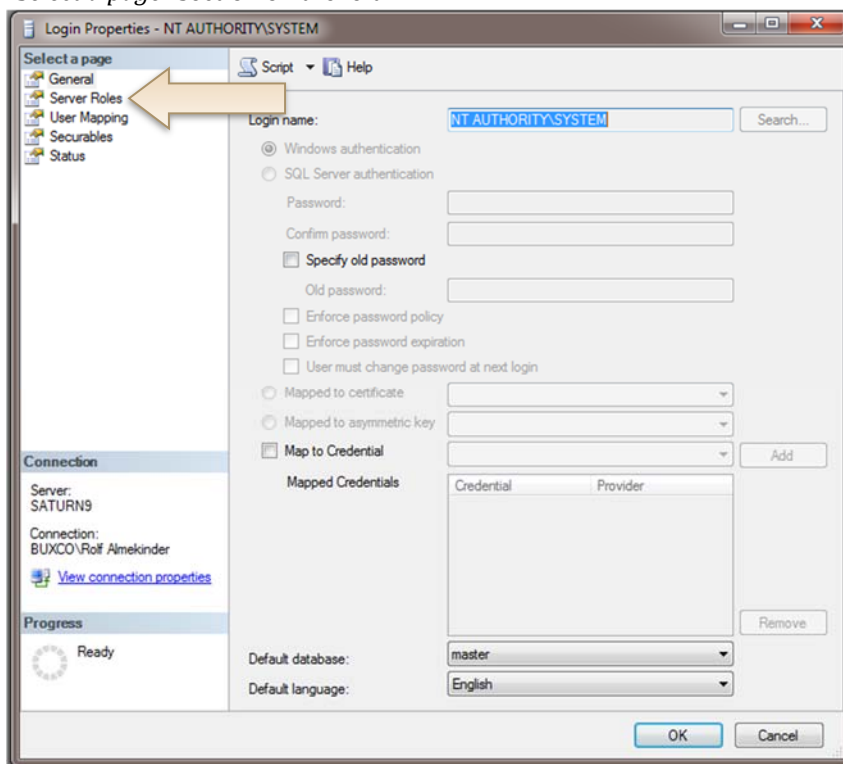


11. Complete the driver installation by following the *Windows 7* procedure in the previous section.

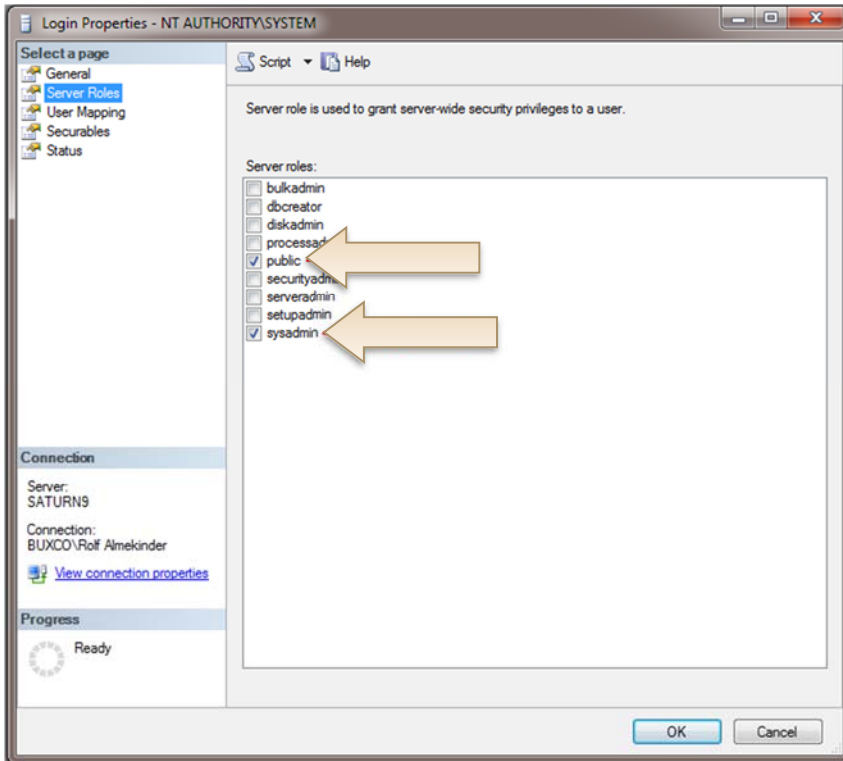
APPENDIX 4 – MANUAL MICROSOFT SQL SERVER 2014 CONFIGURATION

The 2.8.x install will automatically configure the database server roles. However, if you are manually configuring the roles, please complete the following steps for proper operation.

1. Run SQL Server Management Studio by navigating through the following menus:
Start | All Programs | Microsoft SQL Server 2014 | SQL Server Management Studio
Right-click the program and click **Run as Administrator**.
2. In the *Server Name* field select the **FinePointe** server. This item is normally preceded by the computer name, as in “<computer name>\FINEPOINTE”.
3. Click **Connect**.
4. On the left side of the window, open the folder **Security | Logins**. Next, double-click on the login **NT AUTHORITY\SYSTEM**.
5. The *Login Properties* dialog for “NT AUTHORITY\SYSTEM” should open. Select **Server Roles** from the “Select a page” section on the left.



- A list of Server roles should appear. Make sure “**public**” and “**sysadmin**” are selected. Click the **OK** button.



- Close *SQL Server Management Studio*.

This completes the *Microsoft SQL Server 2014 Configuration*. Please continue to the *FinePointe Server Configuration* section.

APPENDIX 5 – FIREWALL CONFIGURATION

Firewall software installed on the FinePointe server and client computers will need to be configured to allow them to communicate with one another. This is not an issue when everything is installed on one computer. The most common firewall in use is the Windows 7 and Windows 10 firewall. This firewall is turned on by default, and it may keep turning itself on after Microsoft updates are installed. There is also a chance that network domain policy may force the client computers to turn the firewall on. Below is a list of the settings that are required on all FinePointe servers and clients.

Please check the firewall settings to ensure the following are allowed:

- **FinePointeSVR.exe must be allowed.**
Default path: C:\Program Files\BuxcoDSI\FinePointe\FinePointeSVR.exe
- **FinePointeReview.exe must be allowed.**
Default path: C:\Program Files\BuxcoDSI\FinePointe\FinePointeReview.exe
- **FinePointeStation.exe must be allowed.**
Default path: C:\Program Files\BuxcoDSI\FinePointe\FinePointeStation.exe
- **UDP Port 777 must be allowed**
- **sqlbrowser.exe must be allowed.**
Default path for SQL 2014: C:\Program Files (x86)\Microsoft SQL Server\90\Shared\sqlbrowser.exe
- **sqlservr.exe must be allowed.**
Default path for SQL 2014: C:\Program Files\Microsoft SQL Server\MSSQL12.FINEPOINTE\MSSQL\Binn\Sqlservr.exe
- **The specific network subnet that the FinePointe computers reside on must be allowed in the Scope setting for each of these ports. Alternately, the Scope setting can be configured to allow "any computer".**