

ADJUSTING THE TIMEOUT OF A PHYSIOTEL™ DIGITAL IMPLANT

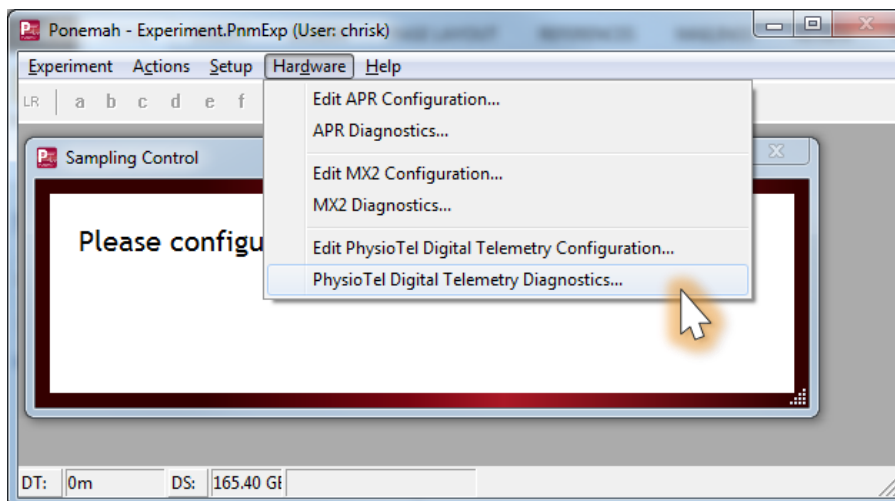
During normal operation a PhysioTel Digital will remain on (stand-by or active) when in communication with the acquisition system. A signal (beacon) is sent from the system to the implant in order to maintain connection. Should the implant not receive the beacon it can timeout and turn off. If this occurs during acquisition the system will need to be restarted and the implant will need to be turned on by a magnet. By default, the time-out period is 1 hour. However, the time-out time is configurable through Digital Diagnostics; which can be adjusted from 1 minute to over 4 hours, in 1 minute increments.

TO ADJUST THE TIMEOUT:

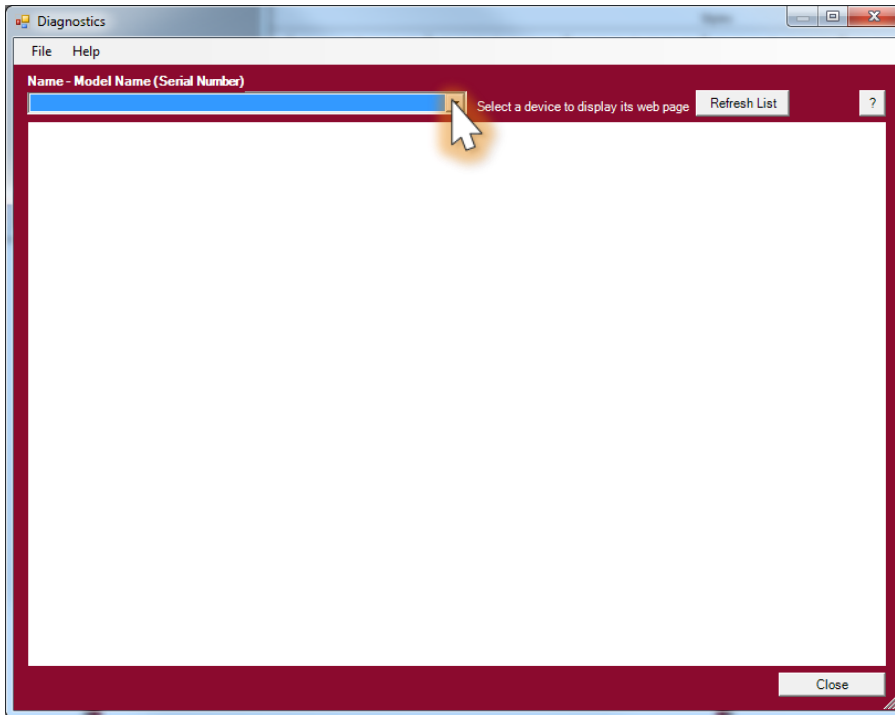
Note: The steps below assume all system hardware is connected and that implants have been configured and are currently on and in stand-by mode.

1. With the CLC connected to the system, launch **Ponemah**.
2. Select **Hardware | PhysioTel Digital Diagnostics...**

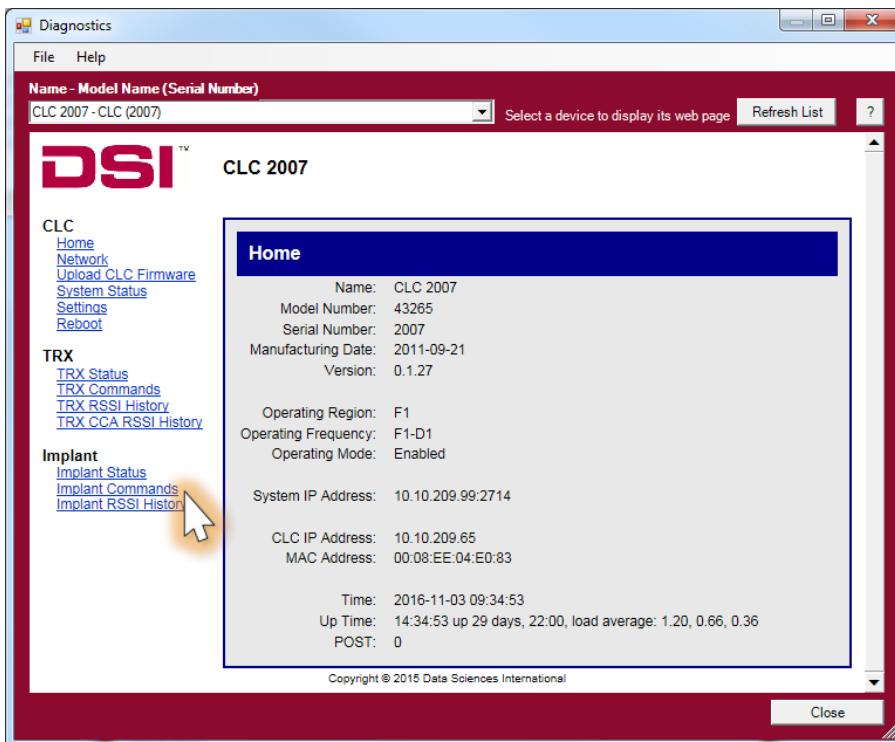
*Note: If using Ponemah v5.20, select **Hardware | Diagnostics...***



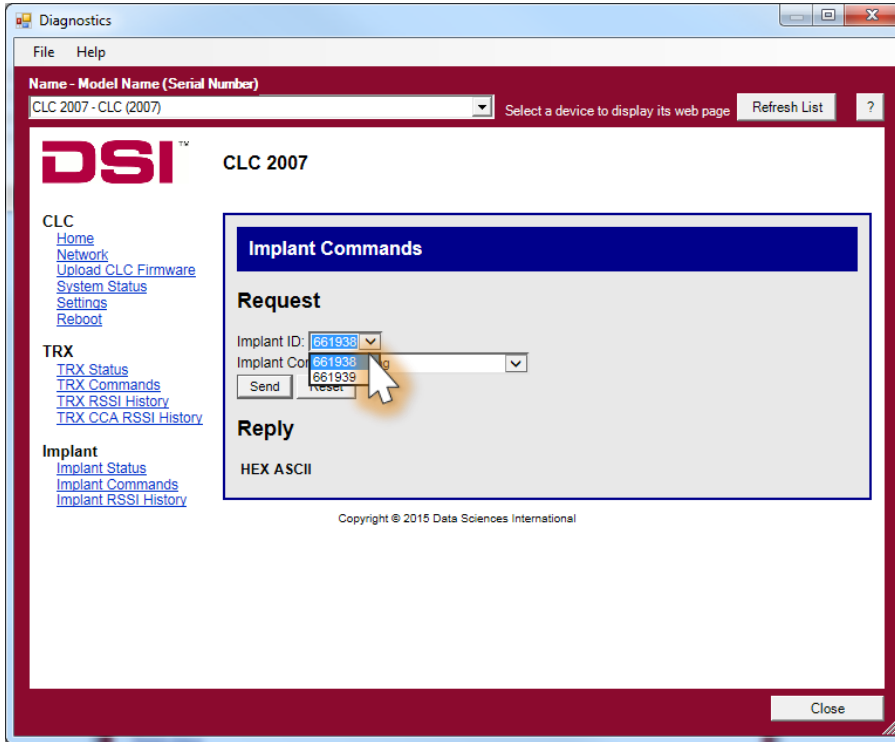
- Choose the CLC from the *Name – Model Name (Serial Number)* dropdown.
Note: Select the **Refresh List** button if the CLC does not appear in the dropdown list.



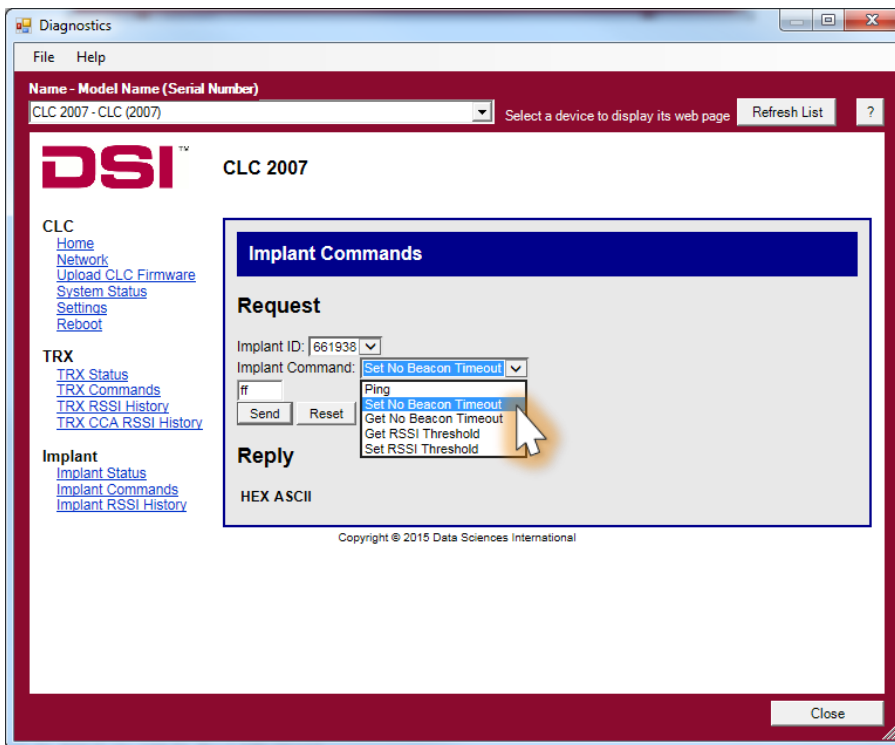
- Select the *Implant Commands* link from the list view on the left side of diagnostics page.



5. Select the Implant ID from the *Implant ID* dropdown box.



6. Select the Implant Command Set No Beacon Timeout.



7. A textbox should appear above the **Send** button that says “ff”.
8. Replace *ff* with the desired timeout in minutes.
Note: The value entered needs to be in hexadecimal (see Notes section below).
9. Click on the **Send** button to set the No Beacon Timeout.
10. The Diagnostics page will say “OK!” in a blue bar at the top when the change is made.
11. Repeat Steps 5-10 for any additional implants.

NOTES

- Common Hexadecimal conversions.
 - 60 minutes = 3C (default system setting)
 - 120 minutes = 78
 - 180 minutes = B4
 - 240 minutes = F0
 - 255 minutes = FF (max)
- Changes made to the Set Beacon No Timeout setting in the implant are persistent. They can only be set back to the default value by following the steps above and entering in a value of ‘3C’.