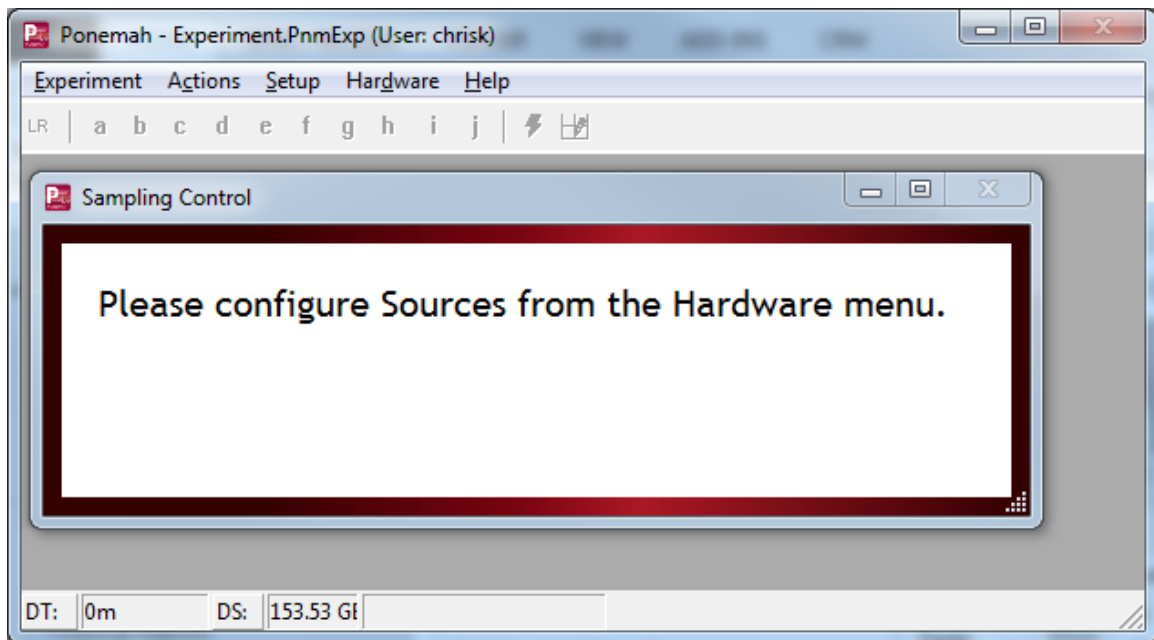


# UPDATING THE DEFAULT SPECIES IN PONEMAH V6.X

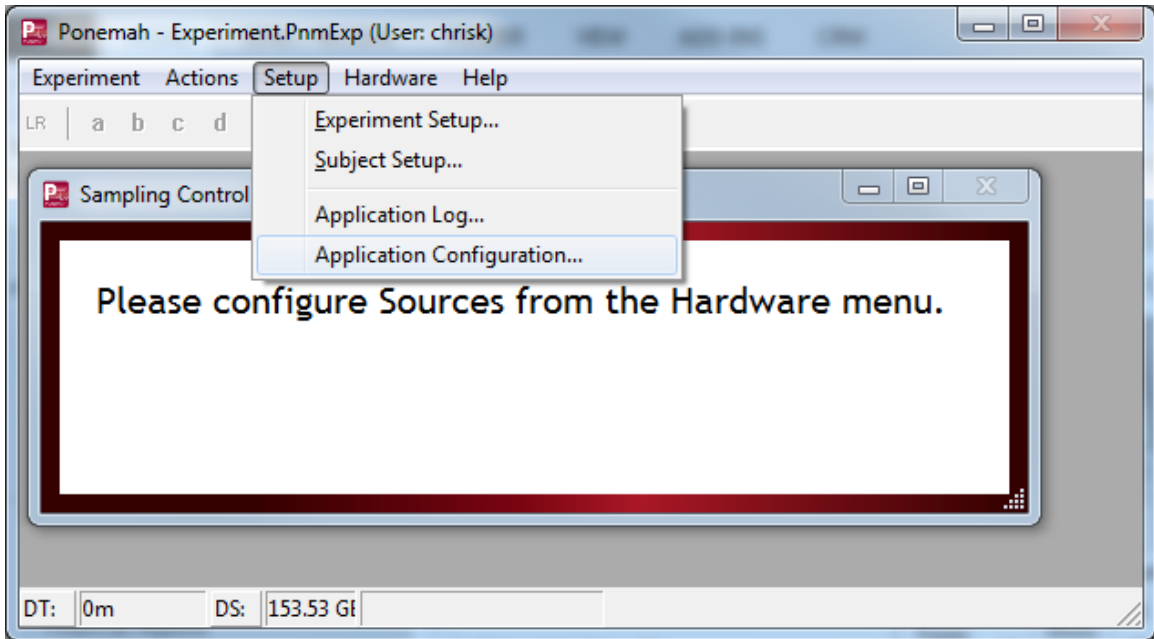
The Species setting is used by Ponemah to configure analysis module settings for accurate data analysis. Therefore, it is critical to define the Species setting to the species whose heart rate most closely represent the heart rate of the species you are using. By default, Ponemah v6.x will automatically define the Species setting to Dog upon creating a new Subject. This can be updated within the Setup | Subject Setup | Subject Details page. However, you may also update the default Ponemah Species setting such that each new Subject created is defaulted to the species with which you most typically work.

To update the default Ponemah Species:

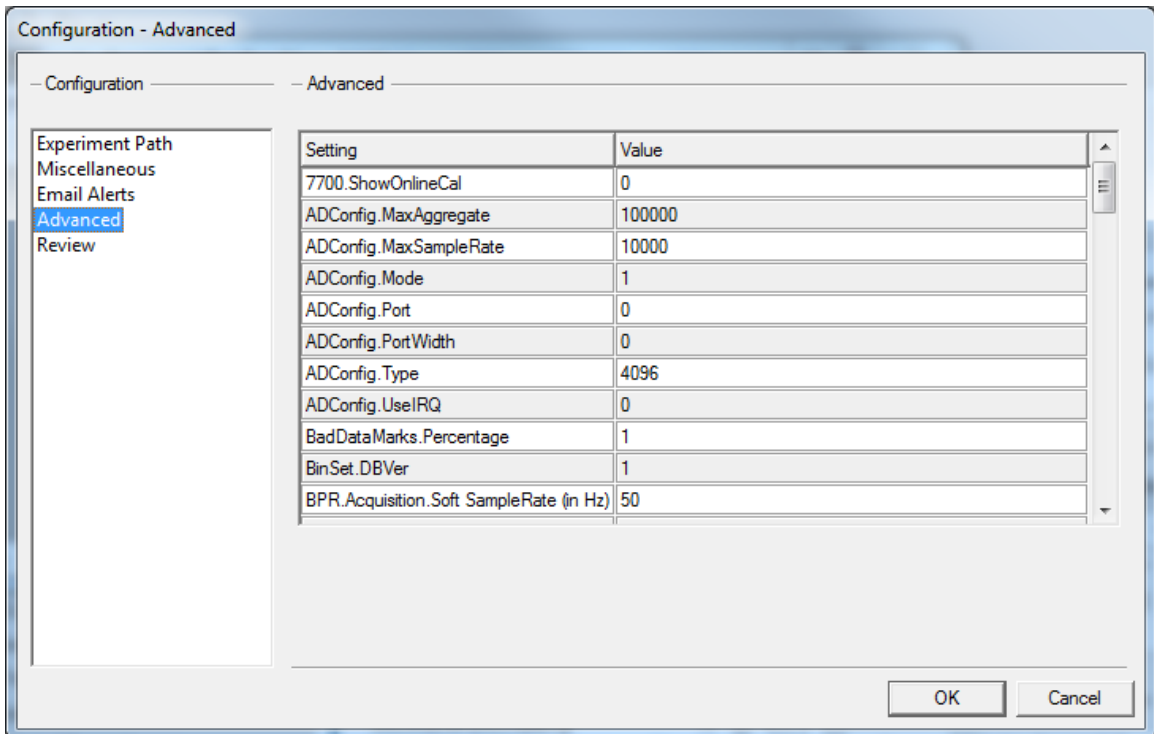
1. Open an Experiment (old or new).



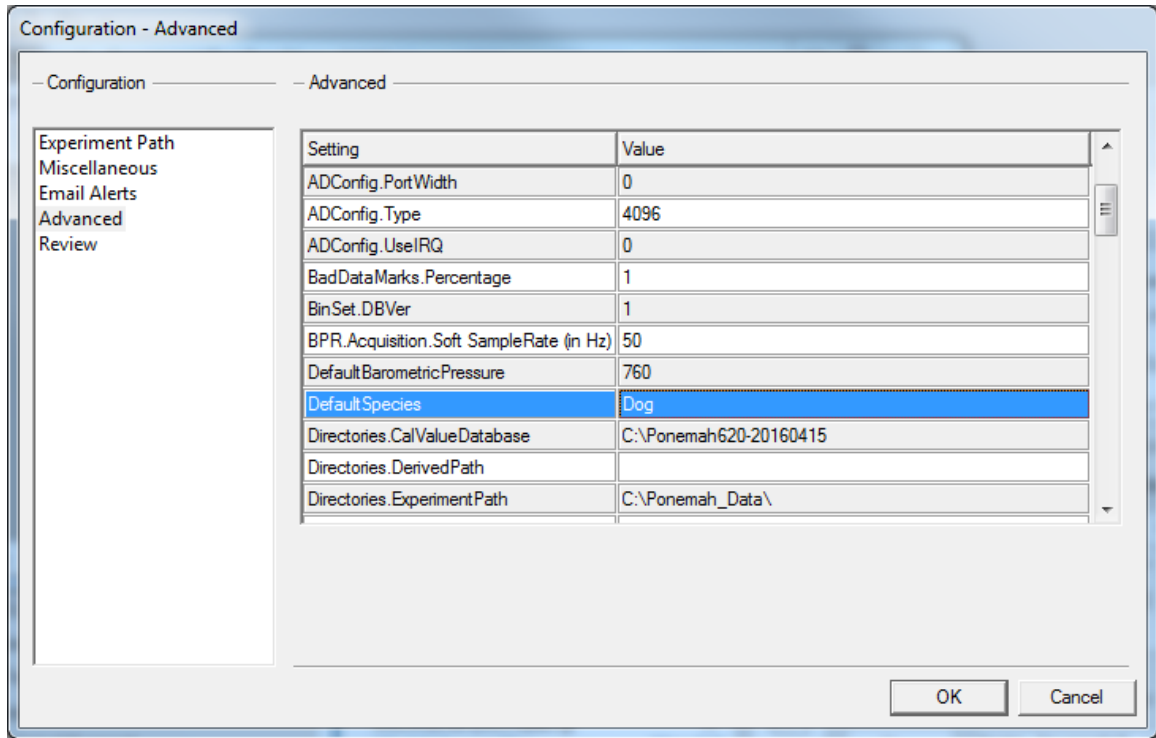
2. Select **Setup | Application Configuration...**



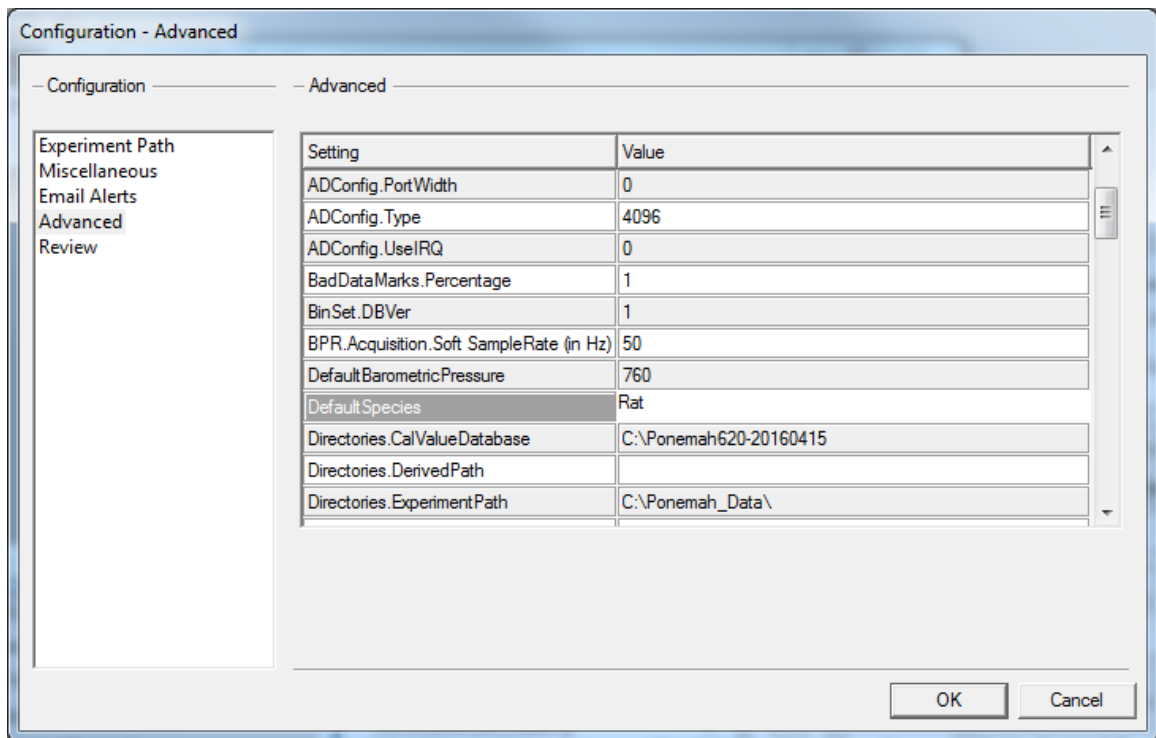
3. Select **Advanced**.



4. Scroll down and locate the **DefaultSpecies** setting.



5. Left-click the *Value Cell* and type in the desired default species (**Mouse, Rat, Dog, or Monkey**).



6. Click **OK**.