

## INSTALLATION NOTES

### CLC FIRMWARE 0.1.27

Prior to installing, it is recommended to review the CLC Firmware 0.1.27 Release Notes. The following are the instruction to install the firmware update.

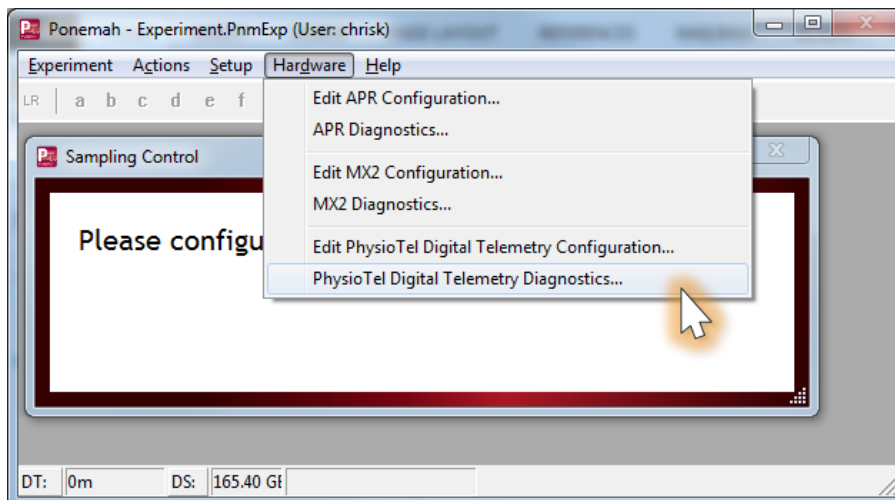
#### ACCESSING CLC FIRMWARE

*The website is the primary means for delivering firmware. If a CD is desired, one can be requested by contacting DSI Customer Service (CService@datasci.com).*

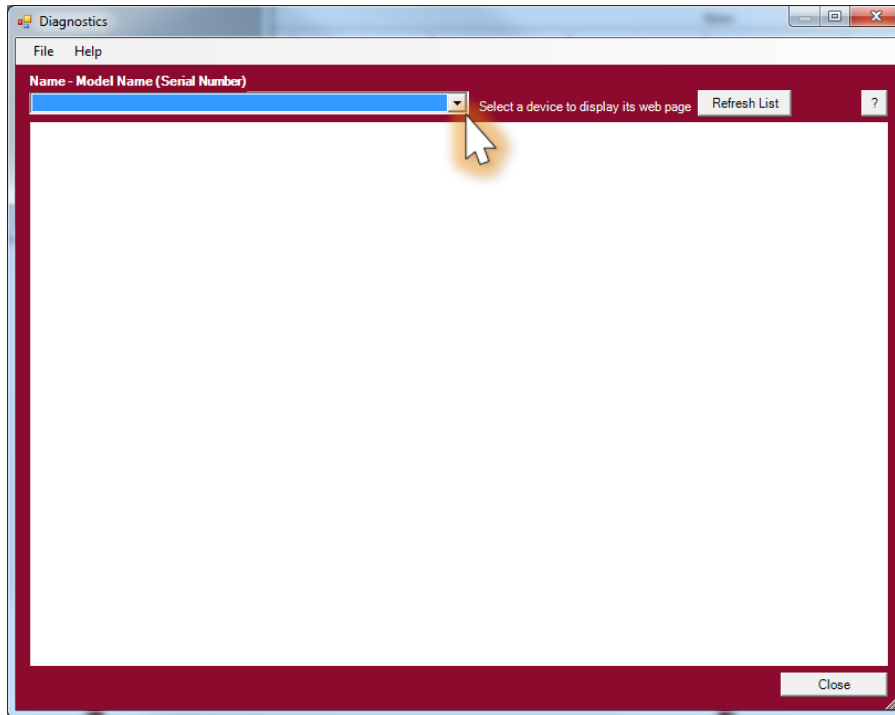
1. Navigate to [www.datasci.com](http://www.datasci.com)
2. Browse to **Resources | DSI Gateway Portal**.
3. Login using your **User Name** and **Password**. If you have forgotten or do not have a User Name and Password, the ability to request a new password or register at the site is available.
4. Select **Software Updates**.
5. Click the **CLC 0.1.27.zip** to download the contents to a desired location.
6. Extract the files by **right-clicking** the .zip file and choosing **Extract**.

#### Installing CLC Firmware

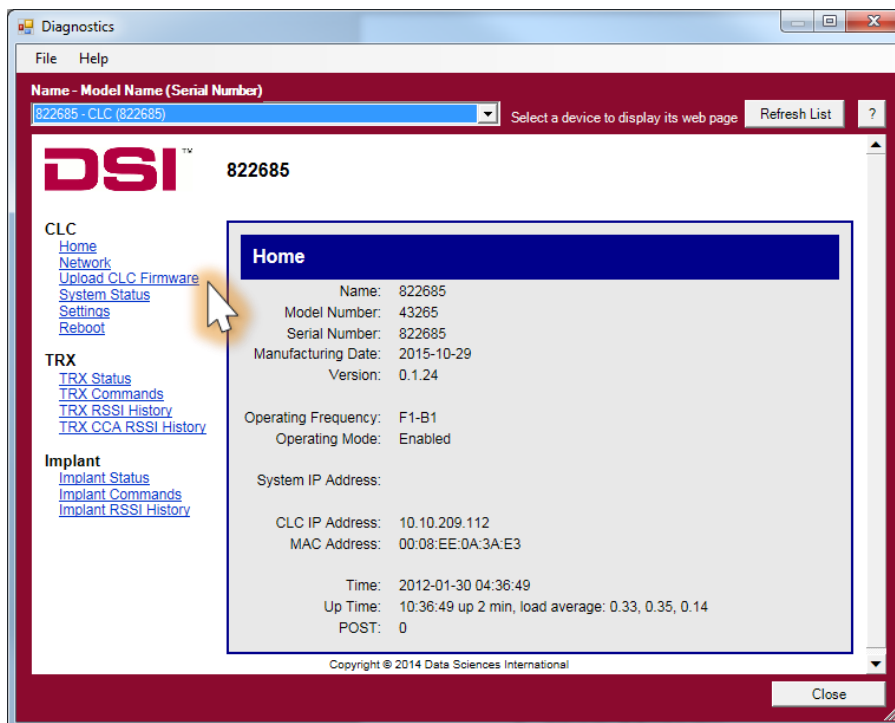
1. With the CLC connected to the system, launch **Ponemah**.
  2. Select **Hardware | PhysioTel Digital Diagnostics...**
- Note: If using Ponemah v5.20, select **Hardware | Diagnostics...***



3. Choose the CLC from the *Name – Model Name (Serial Number)* dropdown.  
*Note:* Select the Refresh List button if the CLC does not appear in the dropdown list.

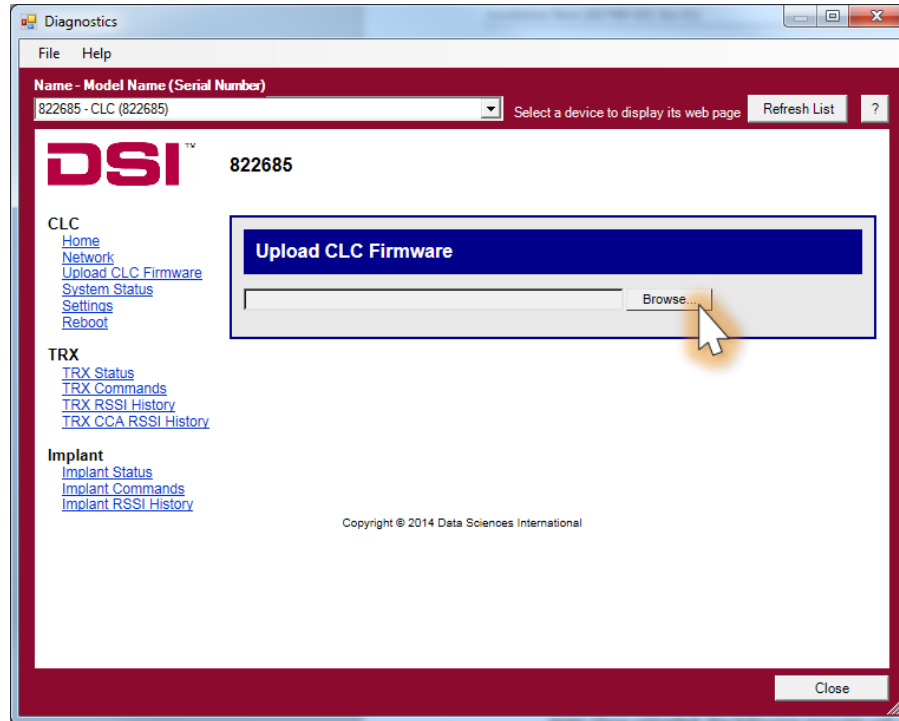


4. Select the *Upload CLC Firmware* link from the list view on the left side of diagnostics page.

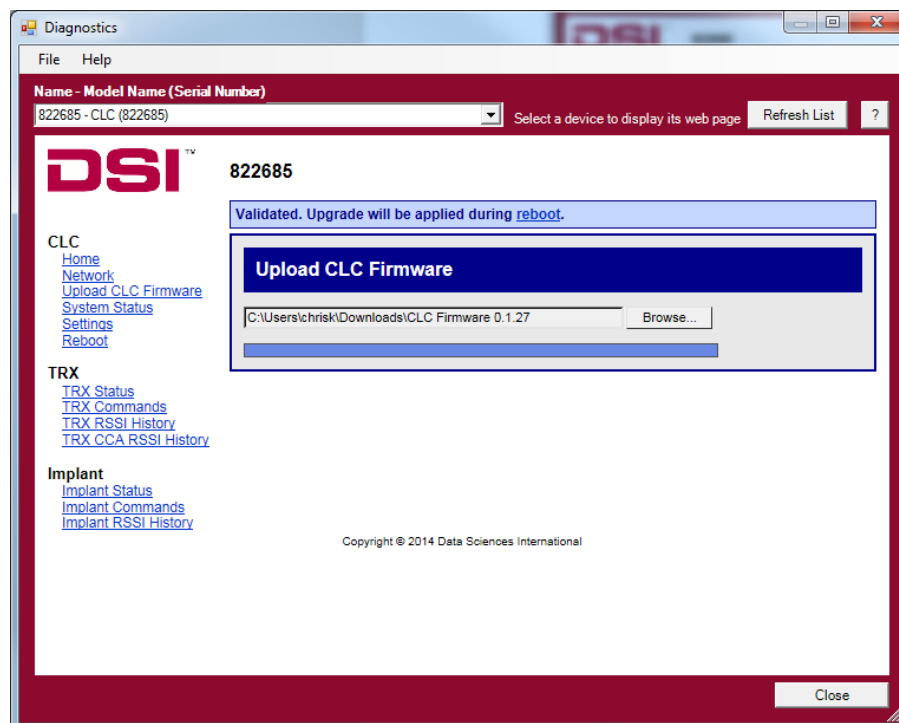


5. Please complete steps a. – d. below twice.

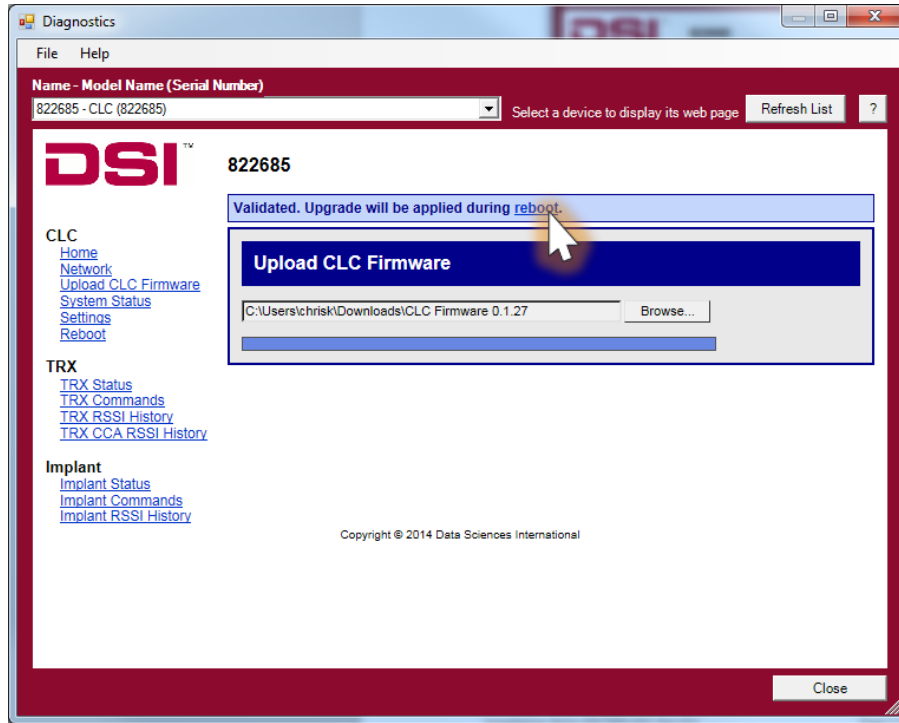
- a. Select the **Browse...** button.



- b. Select the *CLC 0.1.27* file obtained during the .zip extract step above. Once uploaded, the following message will appear: *Validated. Upgrade will be applied during reboot.*



- c. Select the **reboot** link within the message to navigate to the *Reboot* diagnostics page.



- d. Select the **Reboot** button.

